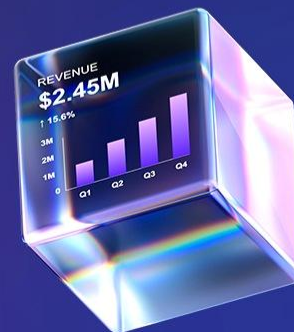




# Autonomous Finance Realized

Welcome to the Delegation Era



# What About Cash?

## Direct Cash Flow Visibility on Prophix One

Aubrey Chapnick  
Product Marketing Director



# Housekeeping



## EARN 1 CPE CREDIT

Answer poll questions and complete the post-event survey to be eligible. QR code at the end of the presentation.



## Q&A

Q&A is at the end, but feel free to ask questions throughout the presentation.

# What We'll Cover Today

1 The Case For Cash

2 Cash Management Overview

3 Cash Management Demo

4 What You Can Do Next

5 Questions!





Your PC ran into a problem and needs to restart. We're just collecting some error info, and then we'll restart for you.

20% complete



For more information about this issue and possible fixes, visit <https://www.windows.com/stopcode>

If you call a support person, give them this info.

Stop code: CRITICAL\_PROCESS\_DIED





"We were always focused on our profit and loss statement.

But cash flow was not a regularly discussed topic. It was as if we were **driving along, watching only the speedometer**, when in fact **we were running out of gas.**"

- *Michael Dell*

# Audience Poll # 1

POLL

What % of Finance Leaders State Cash Visibility and Forecasting is Their Most Challenging Task

1

10%

2

30%

3

40%

4

50%

5

60%

**More than 60% of  
Finance professionals  
cite cash and liquidity  
forecasting as their  
most challenging task.**

**2025 AFP Treasury Benchmarking Survey Report**

# Audience Poll # 2

POLL

What's the biggest reason cash flow visibility and forecasting is so hard at your company?

1

Data lives in too many disconnected systems

2

We don't have the team or tools to do it well

3

We don't reconcile short-term and long-term forecasts against each other

4

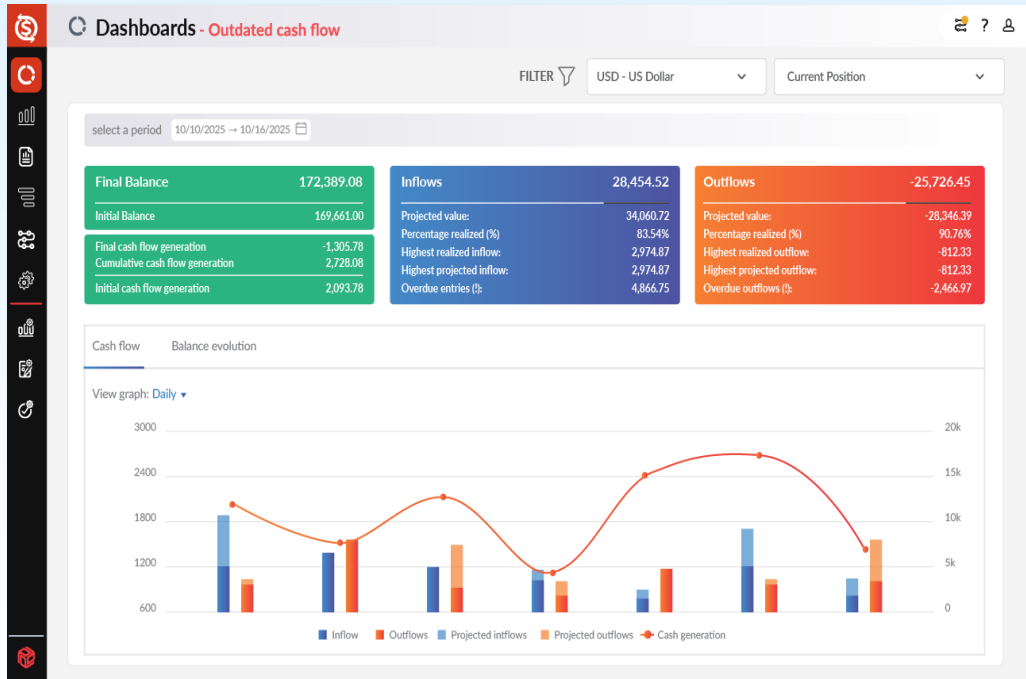
The people who drive cash aren't measured on it

5

Other

# Prophix One Cash Management

Direct cash flow visibility for externally backed and working capital sensitive multi entity businesses



## Know Where Cash Stands

Get a consolidated picture of cash position, inflows, outflows, aging.



## See Where Is Cash Going

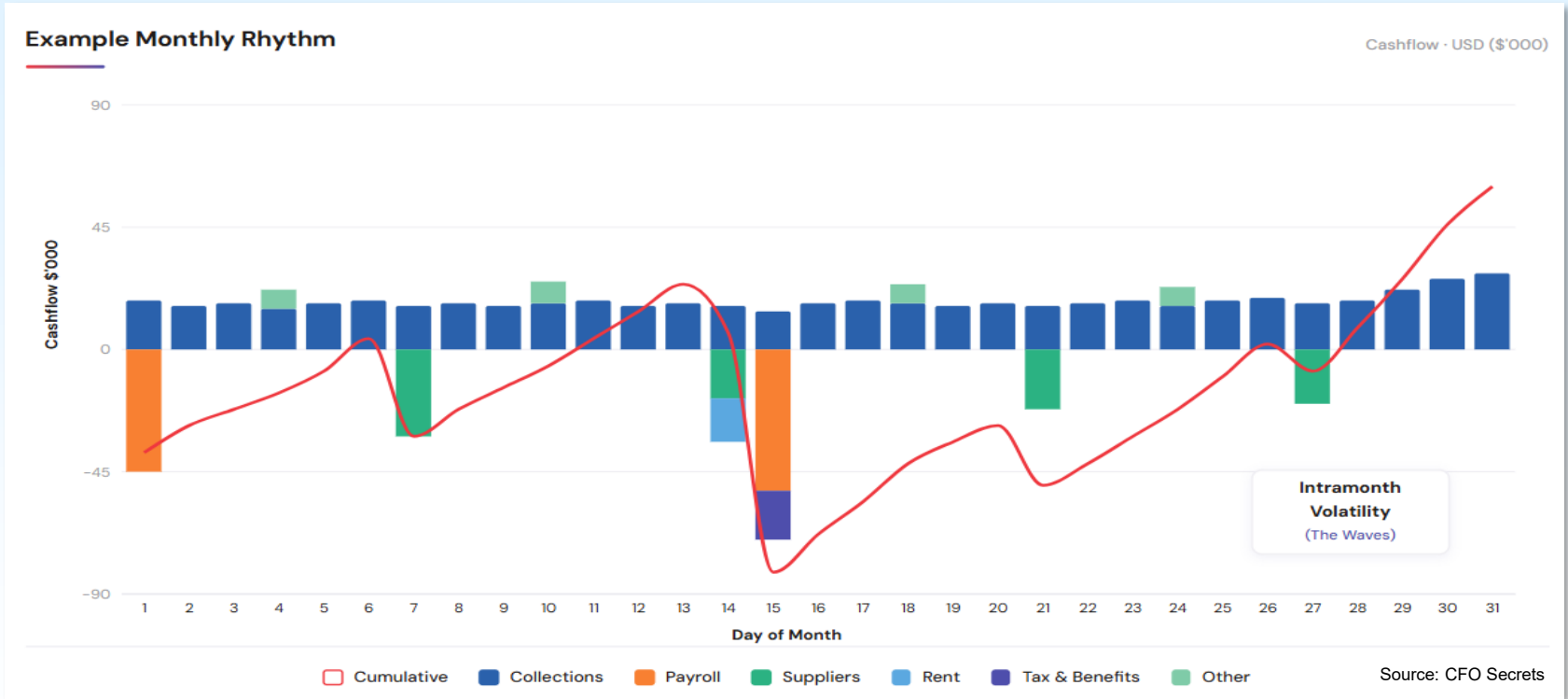
Understand the forward-looking picture of cash without manual projections.



## Model What Happens to Cash "If"

See payment timing impacts on cash across scenarios to put cash to work.

# Why Cash Management?



Cash planning often happens at a monthly or quarterly level using historical data. You lose insight into the behavior that underpins cash flow and intramonth working capital volatility.

# Why Cash Management?

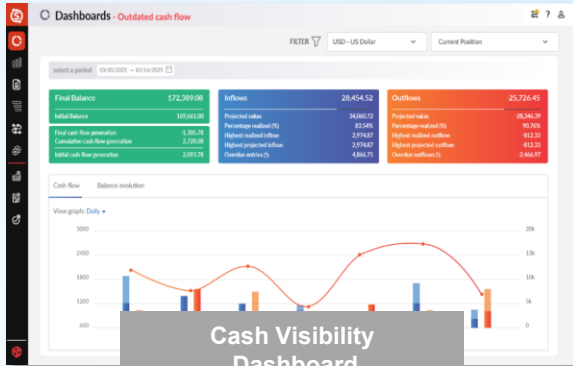
**70%**

of Prophix customers note they are interested in cash flow forecasting.

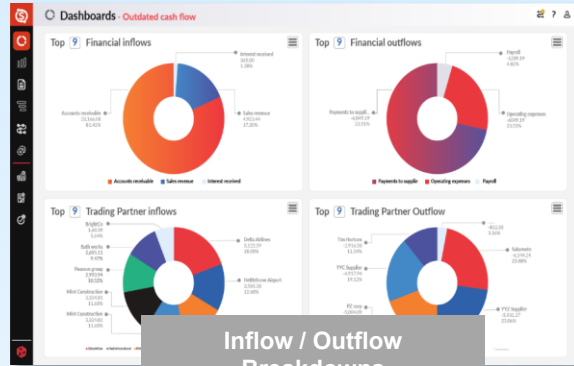
**88%**

of customers spend **6+ hours** / month to creating cash forecasting scenarios, with an av of **19 hours** / month.

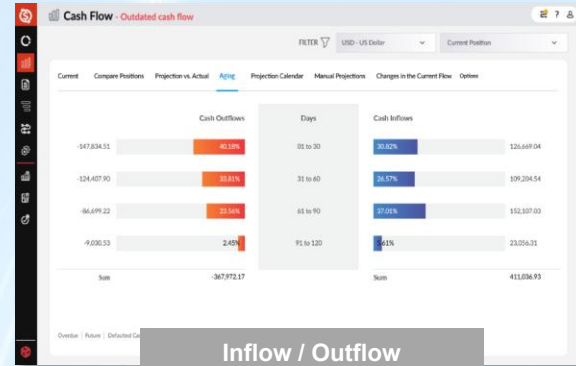
# Cash Management Key Capabilities



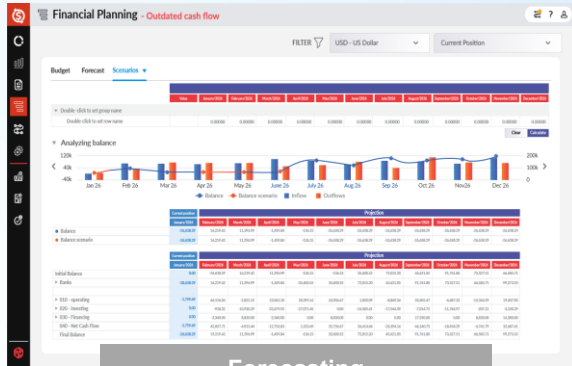
Cash Visibility Dashboard



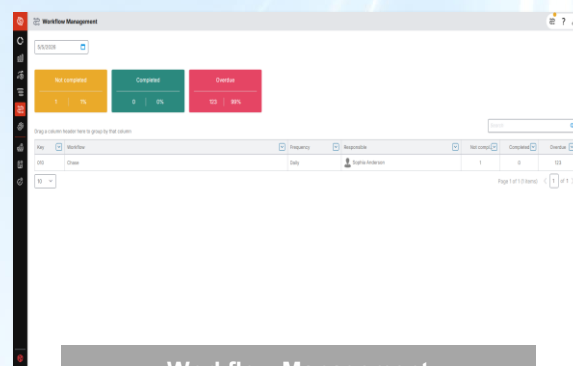
Inflow / Outflow Breakdowns



Inflow / Outflow Aging



Forecasting and Modeling



Workflow Management and Governance

A cluttered office space filled with papers, certificates, a clock, and various office supplies. The scene is busy and disorganized, with items scattered across desks and shelves. Two white boxes with blue borders are overlaid on the image, containing text.

**~15–25**

Dedicated, cash flow forecasting tools on the market.

**60+**

Solutions that include cash forecasting as one capability among many.

# Where Cash Management Fits in the Crowd

Alternative	Pros	Cons
<b>Excel + (AI)</b>	<ul style="list-style-type: none"> <li>• Cost effective</li> <li>• Familiar</li> <li>• Flexible</li> </ul>	<ul style="list-style-type: none"> <li>• Manual and time consuming</li> <li>• Insights lags and are outdated</li> <li>• High likelihood for errors</li> </ul>
<b>ERP Add On</b>	<ul style="list-style-type: none"> <li>• No added vendor complexity</li> </ul>	<ul style="list-style-type: none"> <li>• Multi-entity / ERP cash consolidation</li> <li>• No scenario modeling and forecasting</li> </ul>
<b>FP&amp;A Tools</b>	<ul style="list-style-type: none"> <li>• Combines FP&amp;A and cash</li> </ul>	<ul style="list-style-type: none"> <li>• Often not direct cash visibility</li> </ul>
<b>Treasury Management Platforms</b>	<ul style="list-style-type: none"> <li>• Covers E2E treasury, FX and liquidity automation</li> <li>• Automated bank connectivity</li> </ul>	<ul style="list-style-type: none"> <li>• Expensive</li> <li>• Complicated</li> </ul>
<b>AR / AP Solutions</b>	<ul style="list-style-type: none"> <li>• Good for chasing, making and collecting payments</li> <li>• Can include cash reconciliation and bank connectivity</li> </ul>	<ul style="list-style-type: none"> <li>• Expensive</li> <li>• Complex</li> <li>• Long implementation items</li> </ul>
<b>Prophix One Cash Management</b>	<ul style="list-style-type: none"> <li>• Simple</li> <li>• Cost effective</li> <li>• Low learning curve</li> </ul>	<ul style="list-style-type: none"> <li>• Forecasting and scenario modeling is less complex</li> <li>• No bank reconciliation</li> </ul>

# Cash Management Use Case



## Manual Excel Cash Tracking Replacement

*Bring transaction-level and bank balance data into one current view that replaces your manual spreadsheet tracking.*



## Multi Entity Cash Visibility

*Get a consolidated cash view across every entity, with drill-down into accounts, and transactions.*



## Customer Concentration Risk Identification

*See what percent of expected cash inflows depends on each customer, so you can flag concentration risk and prioritize the accounts that matter most.*



## 13-Week Cash Flow Forecasting

*Build rolling 13-week cash forecasts for lenders, the board, or your leadership team.*



## Overdue Collections Identification

*Spot aging receivables before they age further, so you can chase them down and accelerate working capital.*



## Cash Reporting

*Generate cash reports in a single click. No formatting, no manual stitching of data.*

# The Three Things Finance Teams Get With Cash Management



## Capacity

Reclaim the days lost to reconciling cash across spreadsheets, ERPs and more.



## Clarity

Get an accurate, short-term view of cash across every account and entity.



## Confidence

Make forward cash decisions you can defend from working capital to long-term strategy.

# Audience Poll # 3

POLL

Which of the following would be of the highest priority for your business right now?

1

Manual Excel Cash Tracking Replacement

2

Multi Entity Cash Visibility

3

Customer Concentration Risk Identification

4

13-Week Cash Flow Forecasting

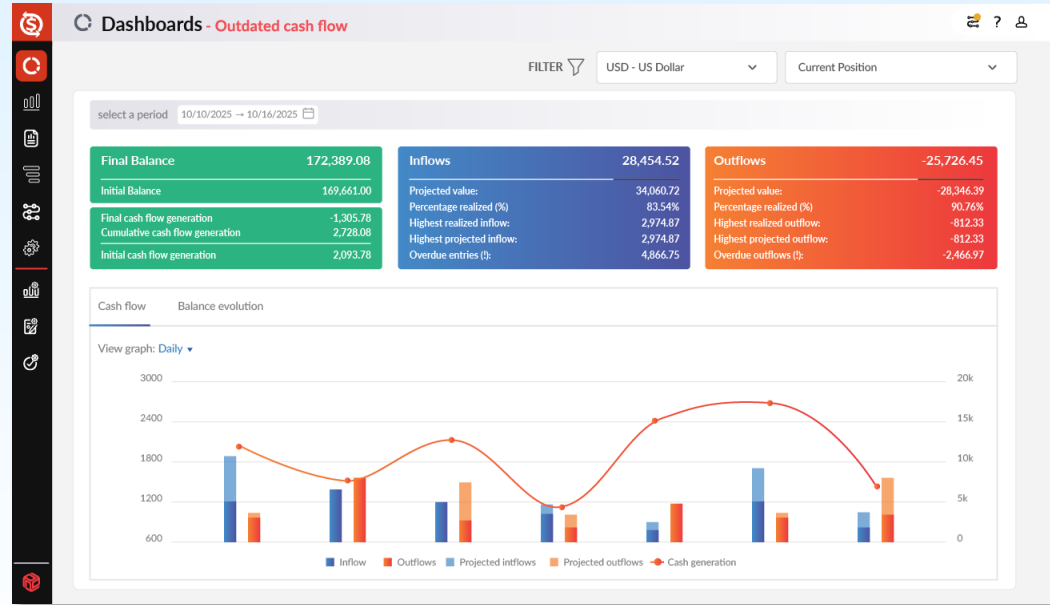
5

Overdue Collections Identification

6

Cash Reporting

# Demo



# What You Can Do Next

1

## Review your current approach to cash visibility

Ask yourself, what's working, what's not, what could we do if we made improvements?

2

## Assess your current ERP Setup

If your current cash visibility and tracking isn't working, explore how your ERP currently tracks it.

3

## Talk to your CSM and Account Manager

Reach out to your Customer Success Manager and Account Management to book a full discovery is Cash Management is right for you.



**Any  
Questions?**



# Thank you

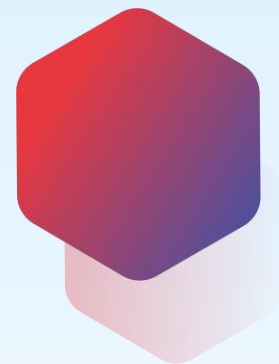


Scan the QR code and complete  
the course evaluation to earn  
your CPE credit

**Aubrey Chapnick**  
Product Marketing Director  
achapnick@prophix.com

[www.Prophix.com](http://www.Prophix.com)

# Appendix



# This is coming. And you can help shape it.

What you saw today isn't available yet — but your voice determines what it becomes.

We're inviting customers to be part of what comes next — not as observers, but as contributors. The experiences you have, the friction you feel, and the outcomes you need are exactly what this product should be built around.

**Your experience shapes the product. We're here to listen.**

At the conference

**Visit the product & design team**

Come talk to us directly. Tell us what you need, what's missing, and what would make this indispensable for your team.

Early access group

**Influence what gets built next**

Join our early access group to give direct input on the roadmap, test new capabilities before general release, and ensure the product is built around how your team actually works.



# What you can do next

Each of these steps will move you closer to the experience you saw today.

## Expand your platform

### Explore FP&A Plus

Unlock advanced driver-based modelling, expanded scenario planning, and deeper workflow automation — built directly on top of what you use today. **Same data. Same team. Significantly more capability.**



[Download the FP&A Plus comparison guide](#)

## Expand your platform

### Connect your full platform

Prophix connects planning, consolidation, and reporting into a single environment. Each application you add reduces the number of systems your team has to manage.



[Book a call with your account manager](#)

## Have a voice

### Join the early access group

Give direct input on the roadmap, test new capabilities before general release, and ensure the product is built around how your team actually works.



## This week

### Visit the product & design team

We're here at the conference. Come find us, share your experience, and tell us what would make this indispensable for your team.

**Your feedback directly shapes what we build next.**

# Cash Management Roadmap



## Manage Debt and Cashflow Coverage

- Indebtedness dashboard
- Debenture contracts
- Intercompany loan contract
- Liquidity and coverage ratios dashboard

## Optimize Cash Forecasts

- Enhanced historical cash flow projection
- New Cash Flow, Inflows and Outflows Dashboards
- Enhance data connectivity with Prophix Platform

## Accelerate Receivables Collection

- Advance receivables modeling

Capabilities and Features