

---

**Canada  
Health  
Infoway**

# **Social Determinants of Health Working Group**

Monthly Wednesday Zoom Meeting

June 2, 2021 at 9am PT / 12pm ET

## **Co-facilitators:**

Marcy Antonio Phd(c), MPH University of Victoria

Annalijn Conklin PhD, MPH, University of British Columbia

## **Administrative Support:**

Kareen Hall MPH CPHIMS, FACHE, University of Victoria





# 1. Acknowledgement

---

We respectfully acknowledge that the land on which we are hosting this meeting – the land that sustains us – includes the ancestral territories of many First Peoples. Canada Health Infoway recognizes the colonial injustices, many of which continue today and continue to affect the health and well-being of Indigenous people. With the working group dedicated to addressing the social determinants of health it brings to light the importance of engaging in anti-colonial actions to address the historical and ongoing inequities experienced by Indigenous communities. We invite all attendees to reflect on the privilege they have of living, working and playing in the territory from which you are joining this call, and to come with an open heart and an open mind in forging culturally safe spaces and relationships.



# Agenda

- Introductions / Background poll
- Overview of the Working Group
  - Survey of knowledge & experience
- Review of SDOH concepts and frameworks
- Present some current initiatives
- Determine scope of the group (meeting #2)
  - Survey of preferences for focus and achievable tasks

# GROUND RULES FOR DIALOGUE



	Express disagreement with ideas not personalities
	<b>Share airtime</b>
	Stay on topic—connect to what others have said
	<b>Understand &amp; learn from each other</b>

	<b>We are all equal. Leave rank at the door</b>
	Listen respectfully especially when you disagree. Acknowledge you have heard the others
	<b>Look for common ground</b>
	<b>Identify &amp; test assumptions</b>

[changefoundation.ca](http://changefoundation.ca)

Please mute your microphone, use chat to raise ideas.



# Poll #1

## Introductions



## 2. Purpose of Infoway SDOH Group

*SDOH Working Group meeting every first Wednesday of the month. Our next meeting is July 7th, 2021 at 9am PT/12pm ET.*

Explore how to incorporate social determinants of health (SDOH) concepts into digital health systems. In this working group we will apply a strengths-based approach:

- Identifying the ways to collect and use SDOH data;
- Matching actions to target inequities and measuring the impact of these actions;
- and
- Ensuring appropriate and safe collection, storage and use of SDOH data.

# Working Group Meeting Structure

- Presentations and summaries
- Breakout rooms with objectives
- Large group for sharing-back
- Sessions recorded for main meeting (not breakouts) → notes using shared Google Docs
- Posting summary notes and not the recordings

# Poll # 2

Discussion on knowledge  
and experience with SDOH

# What are the social determinants of health (SDOH)?

- **Systematic differences** in health outcomes that are the result of a person's environment/context – be it social, economic, political or physical
- Societal forces leading to unequal health vary by country
- Steepness of social gradients is linked to institutions that distribute health-related resources
- Health inequities = differences that are *unfair & avoidable*

# Current examples of Social Determinants of Health

**How Filipino-Canadian care aides are disproportionately affected by the COVID-19 pandemic**

**COVID-19 increases risk for Canada's 'invisible' homeless women: study**

Low wages, gaps in seniors' care keep people of colour in precarious jobs, says expert

Canada's food insecurity problem is about to get worse due to COVID-19, experts say

The Double Pandemic Of Social Isolation And COVID-19: Cross-Sector Policy Must Address Both

WILL THE CORONAVIRUS MAKE US RETHINK MASS INCARCERATION?

*A New Covid-19 Crisis: Domestic Abuse Rises Worldwide*

**How undocumented migrant workers are slipping through Ontario's COVID-19 net**

# Current examples of Social Determinants of Health

## **Filipino-Canadian care aides**

Low wages

seniors' care  
food insecurity

people of colour

women  
precarious jobs

homeless

Social Isolation

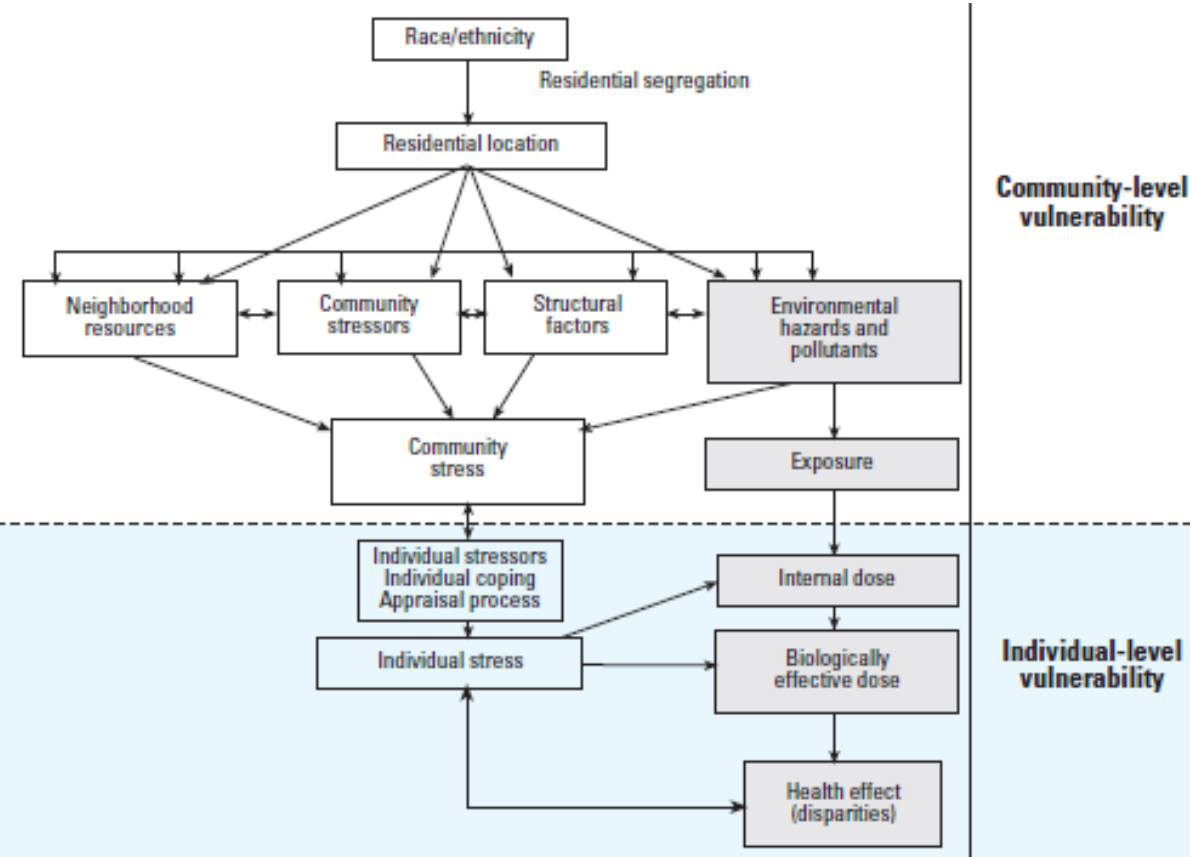
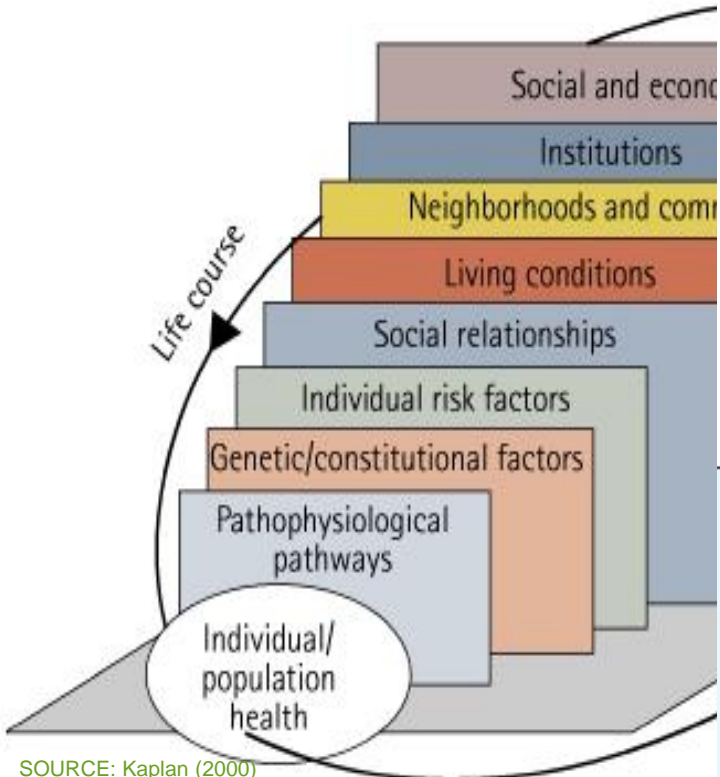
Policy

*Domestic Abuse*

INCARCERATION

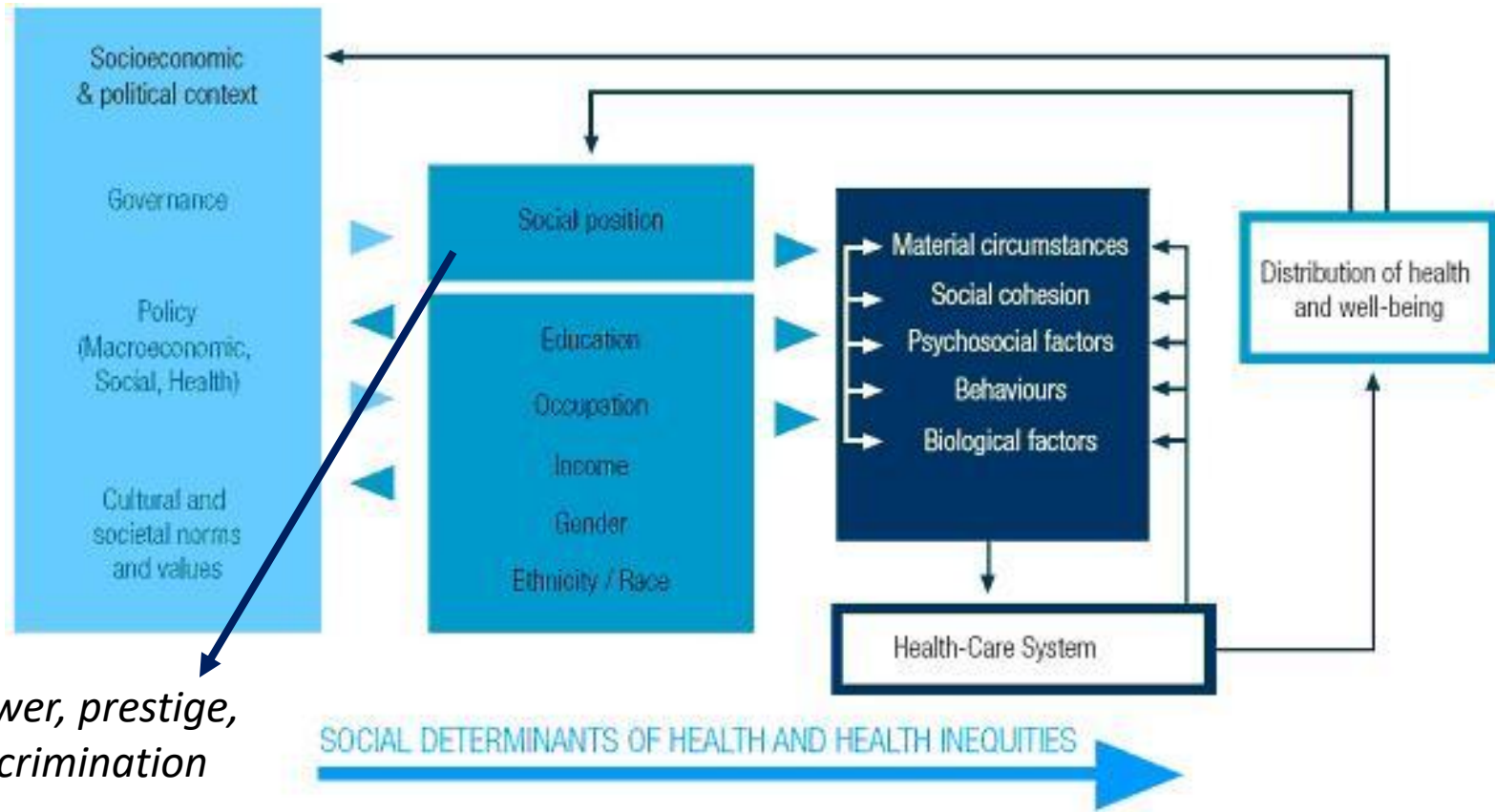
**undocumented migrant workers**

# Upstream determinants of Health Inequities



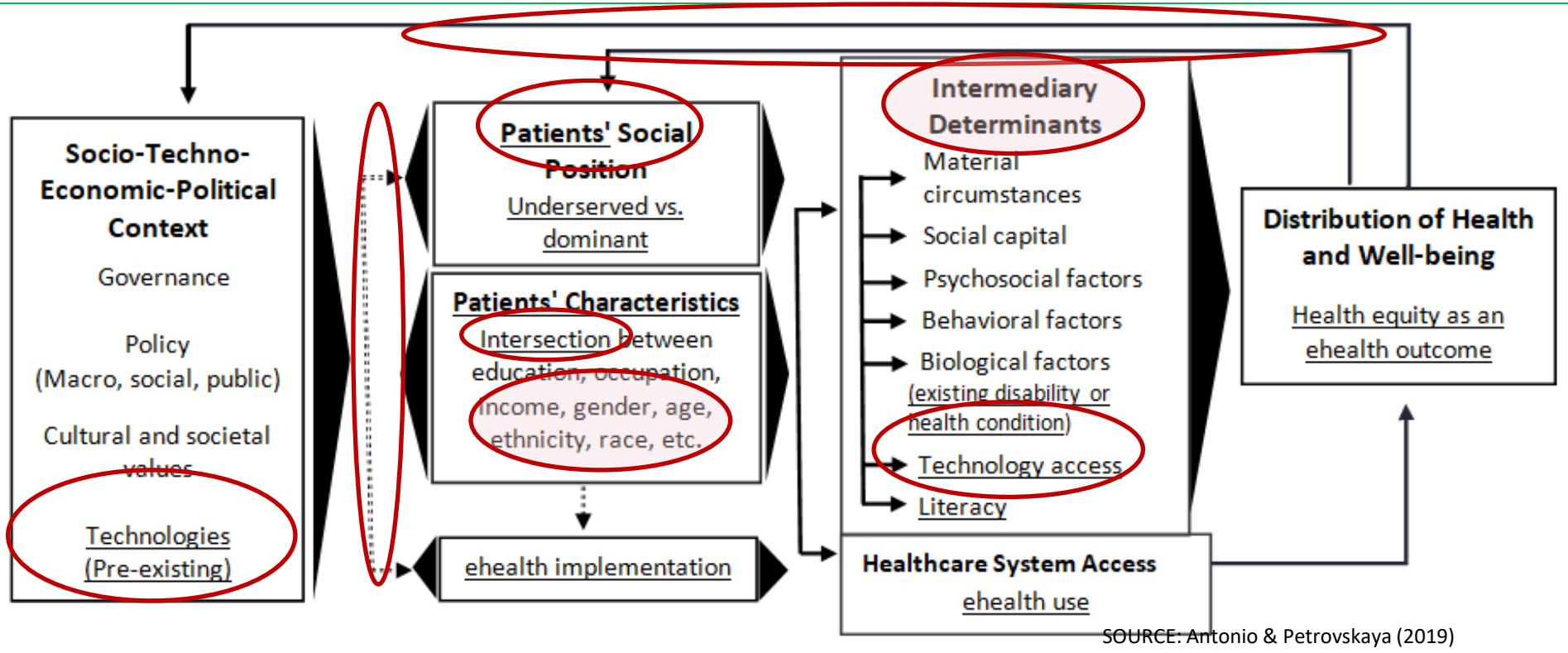
SOURCE: Kaplan (2000)  
[ehp.niehs.nih.gov/docs/2005/7644/7644.html](http://ehp.niehs.nih.gov/docs/2005/7644/7644.html)

# WHO Framework on Health Inequities (2007, 2010)



*Power, prestige,  
discrimination*

# e-Health Equity Framework (eHEF)

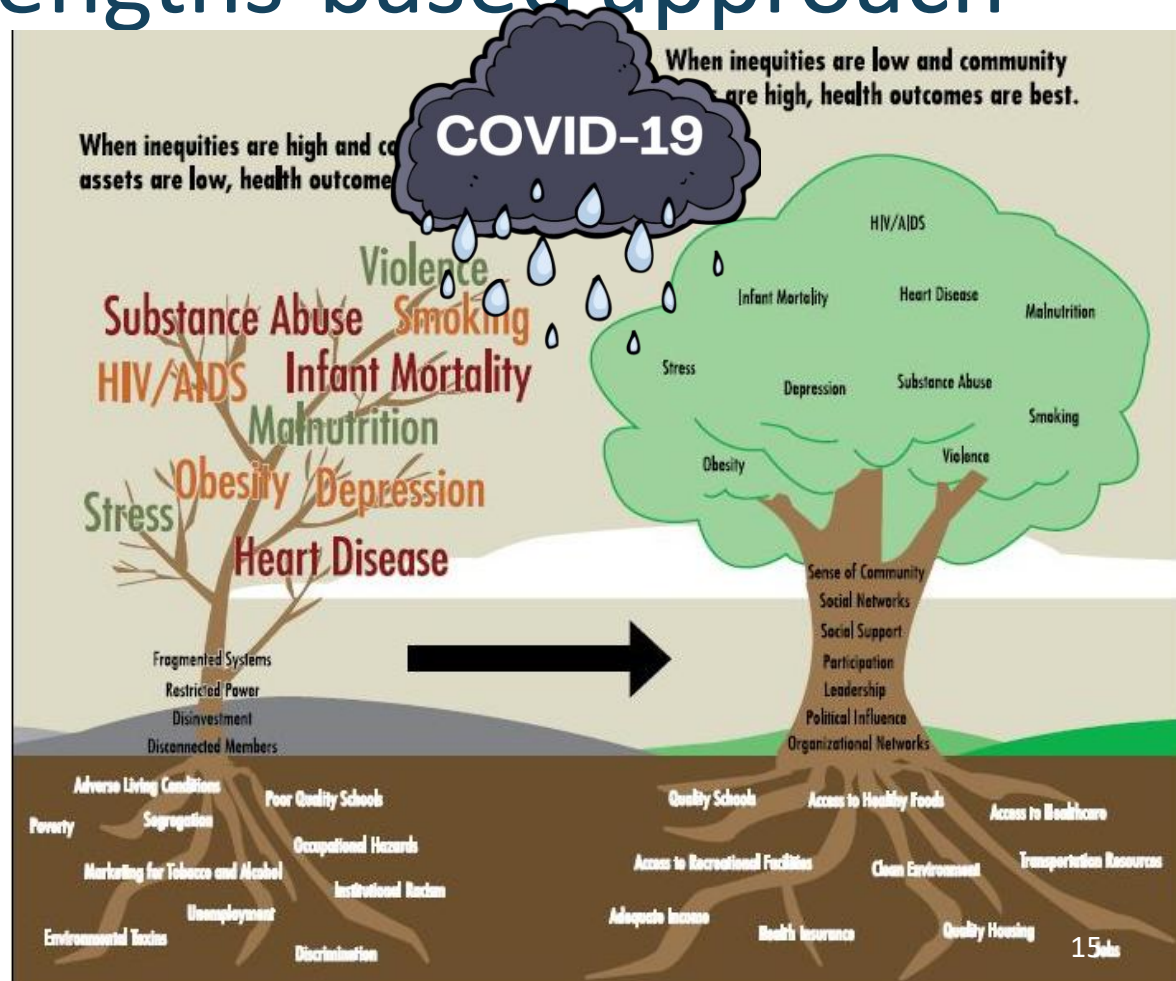


SOURCE: Antonio & Petrovskaya (2019)

# Taking a strengths-based approach

Our built environments cultivate our communities, and our communities nurture our health

SOURCE: Ramirez, Baker & Metzler (2008) CDC



# Social determinants: Canadian perspective

Aboriginal status →  
disability  
early life  
education  
employment and working conditions  
food insecurity  
health services  
gender  
housing  
income and income distribution  
race  
social exclusion  
social safety net  
unemployment and job security



-  Mental Health
-  Physical Health
-  Emotional Health
-  Spiritual Health

Source: Charlotte Reading © 2007  
Illustration by Charliène Robichaud

# Current initiatives

# CIHI proposed standards: race data

**We now know that people of different races do not have significantly different genetics. But our race still has important consequences, including how we are treated by different individuals and institutions. Which race category best describes you? Check all that apply:**

- Black (African, Afro-Caribbean, African Canadian descent)
- East/Southeast Asian (Chinese, Korean, Japanese, Taiwanese descent or Filipino, Vietnamese, Cambodian, Thai, Indonesian, other Southeast Asian descent)
- Indigenous (First Nations, Metis, Inuk/Inuit descent)
- Latino (Latin American, Hispanic descent)
- Middle Eastern- Arab, Persian, West Asian descent (e.g., Afghan, Egyptian, Iranian, Lebanese, Turkish, Kurdish)
- South Asian- South Asian descent (e.g., East Indian, Pakistani, Bangladeshi, Sri Lankan, Indo-Caribbean)
- White- European descent
- Another race category (Specify) \_\_\_\_\_
- Prefer not to answer

**Do you identify as First Nations, Métis and/or Inuk/Inuit?**

- Yes, First Nations
- Yes, Métis
- Yes, Inuk/Inuit
- No
- Prefer not to answer

SOURCE: CIHI (2020)

<https://www.cihi.ca/sites/default/files/document/proposed-standard-for-race-based-data-en.pdf>

# SPARK Tool

## Socio-demographics

**1. If it could be arranged, would translation into another language be helpful at your next appointment?**

- Yes

- No

- If yes, which language → options  
(PUT OPTIONS-PROVINCE DEPENDENT)

**2. Were you born in Canada?**

- Yes

- No

- If no, what year did you arrive in Canada?

## Social Needs

**9. Do you have difficulty making ends meet at the end of the month?**

- Yes

- No

**10. In the last 12 months, did you not fill a prescription or do anything to make a prescription last longer *because of the cost***

- Yes

- No

- Not Applicable

# BC Ministry of Health

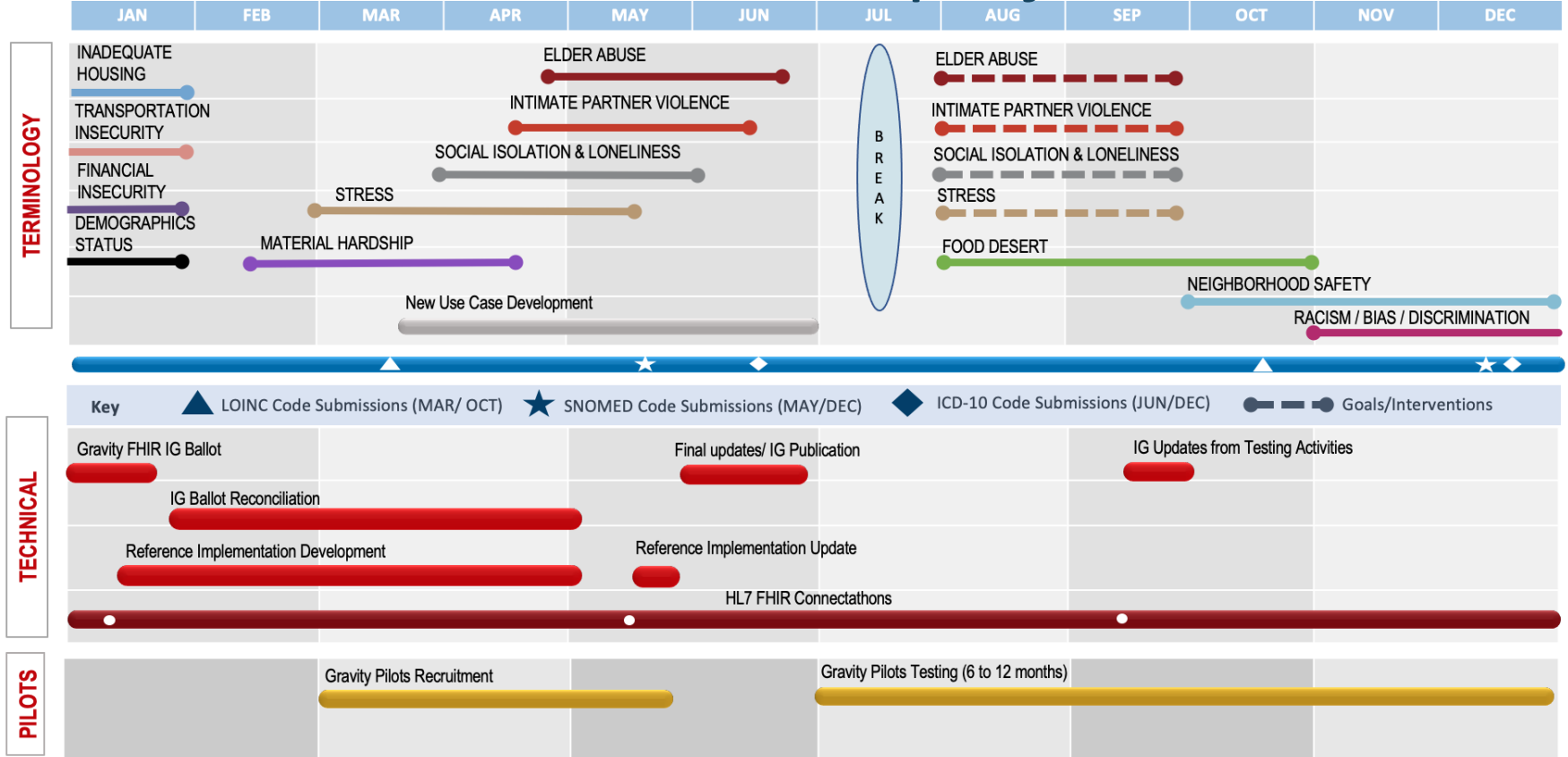
The scope of this standard is limited to defining the data definitions and terminology required to provide consistency to record details about the individual's (as applicable):

- Cultural identity and immigration status,
- Indigenous identity,
- Socio-economic status,
- Housing insecurity,
- Food insecurity,
- Occupation and employment including higher risk work history,
- Language, and
- Social capital/adhesion.

Source: BC Ministry of Health (2021)

<https://www2.gov.bc.ca/gov/content/health/practitioner-professional-resources/health-information-standards/standards-catalogue/bc-social-determinants-of-health-standards>

# The GRAVITY project



Source: The Gravity Project (2021)

<https://confluence.hl7.org/display/GRAV/The+Gravity+Project>

Poll #3 – what do you want  
to get out of the WG?



**Thank you!**  
**Please join us for our next  
meeting on July 7<sup>th</sup>, 2021.**

Marcy Antonio, Phd (c), MPH [mantonio@uvic.ca](mailto:mantonio@uvic.ca)

Annalijn Conklin PhD, MPH [aconklin@mail.ubc.ca](mailto:aconklin@mail.ubc.ca)

Kareen Hall, MPH, CPHIMS, FACHE [kareenhall@uvic.ca](mailto:kareenhall@uvic.ca)

**VISIT THE WEBSITE**  
[www.infoway-inforoute.ca](http://www.infoway-inforoute.ca)

**LET'S CONNECT ON LINKEDIN**  
[www.linkedin.com/company/canada-health-infoway/](http://www.linkedin.com/company/canada-health-infoway/)

**LET'S CONNECT ON TWITTER**  
[@infoway](https://twitter.com/infoway)