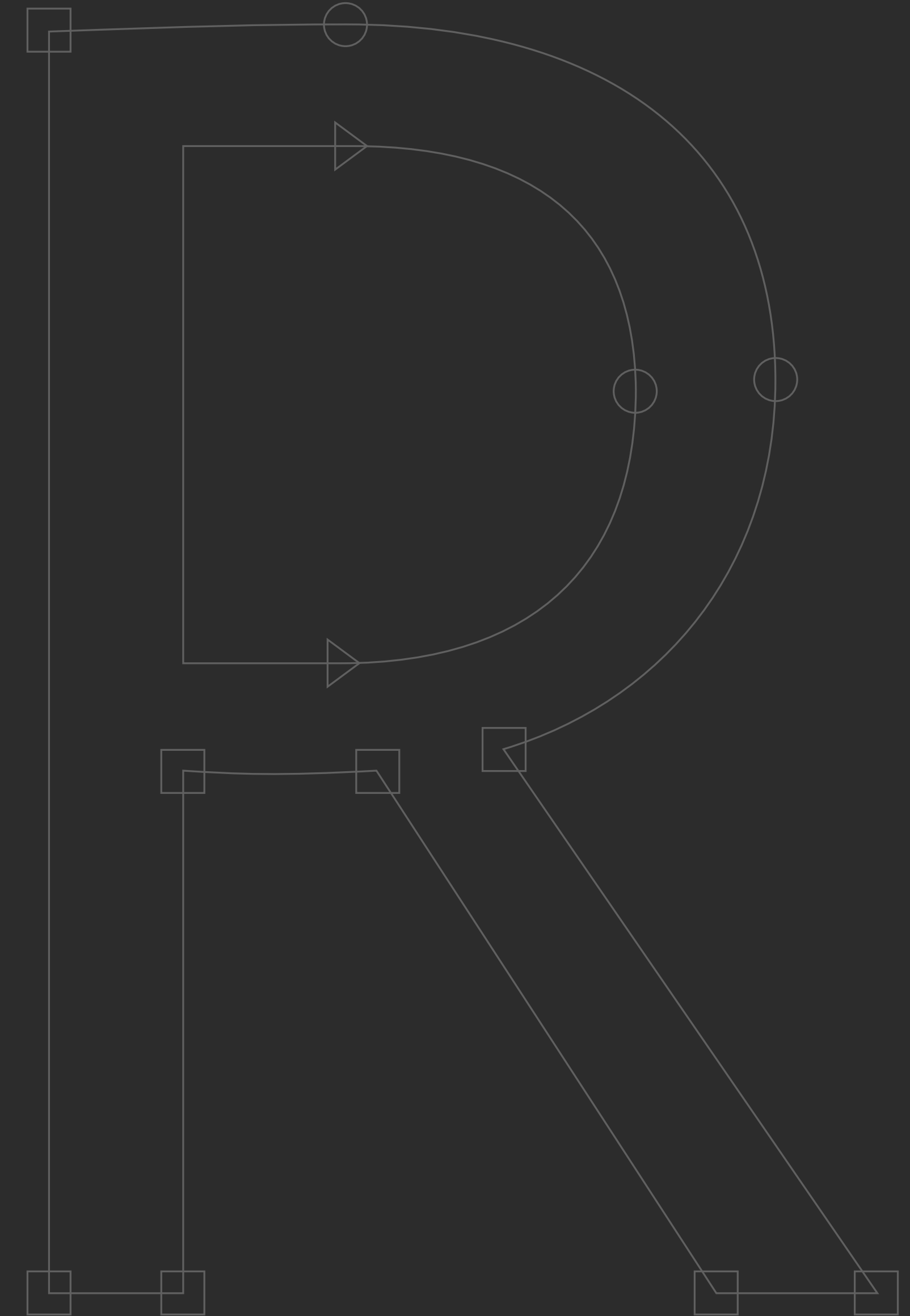


# INFORIVER TYPEFACE

REGULAR WEIGHT  
ANATOMIC SPECIFICATIONS



InfoRiver is a humanist  
typeface performing on  
pixel based medias,  
including monospaced  
numerators for tables.

The anatomy of capital letters are influenced from the proportions of the Roman Capitals. The lower case letters are based on the humanistic minuscule.

InfoRiver font is designed to perform on data transformation with detailed anatomical features for legibility and readability. It is suitable for complex typographic demands and also performs greatly on numeric applications.



# InfoRiver is multilingual

Cieężarówki—Größte—mazlíčkům  
câștigăt—décroître—därpå—çalıştay  
spørsmål—lýðræðis—zaštićen

AFRIKAANS  
ALBANIAN  
CATALAN  
CROATIAN  
CZECH  
DANISH  
DUTCH  
ESTONIAN  
FINNISH  
FRENCH  
GERMAN  
HUNGARIAN  
ICELANDIC  
ITALIAN  
LATVIAN  
LITHUANIAN  
MALTESE  
NORWEGIAN  
POLISH  
PORTUGUESE  
ROMANIAN  
SLOVAK  
SLOVENIAN  
SPANISH  
SWEDISH  
TURKISH

1 2 3  
4 5 6  
7 8 9  
0 . ,

40PT

A humanist typeface performing on screen, including monospaced numerators for tables.

38PT

A humanist typeface performing on screen, including monospaced numerators for tables.

26PT

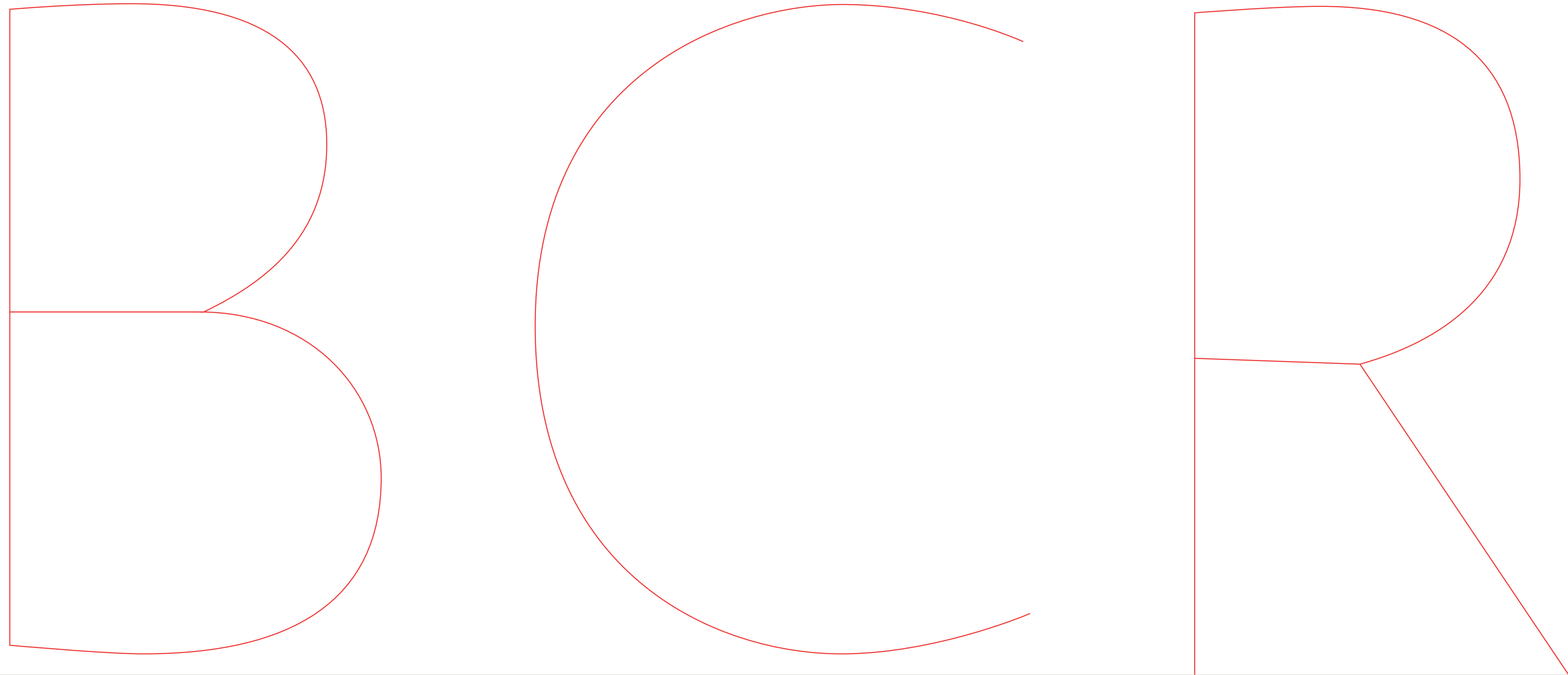
A humanist typeface performing on screen, including monospaced numerators for tables.

QR15

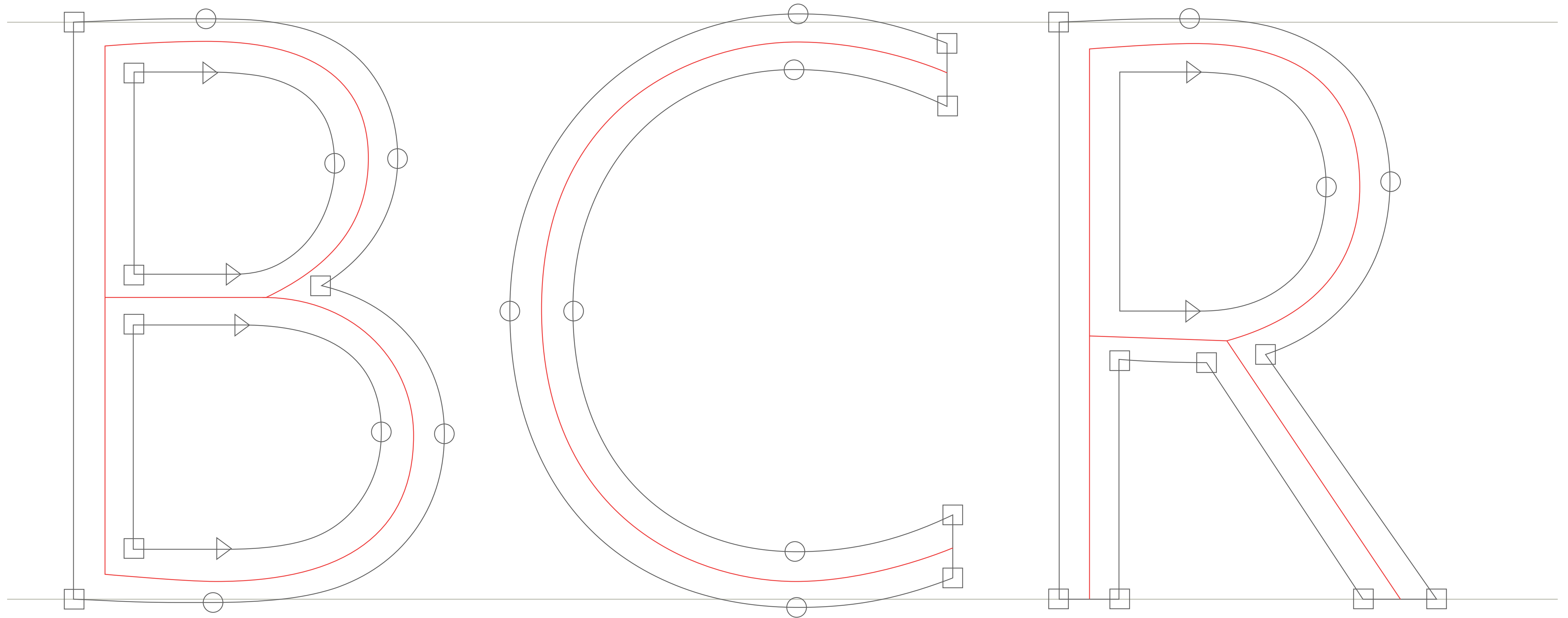
24  
987 BC  
+318

REPORT  
UNIT/  
9.32607015

# ANATOMY OF CAPITALS→

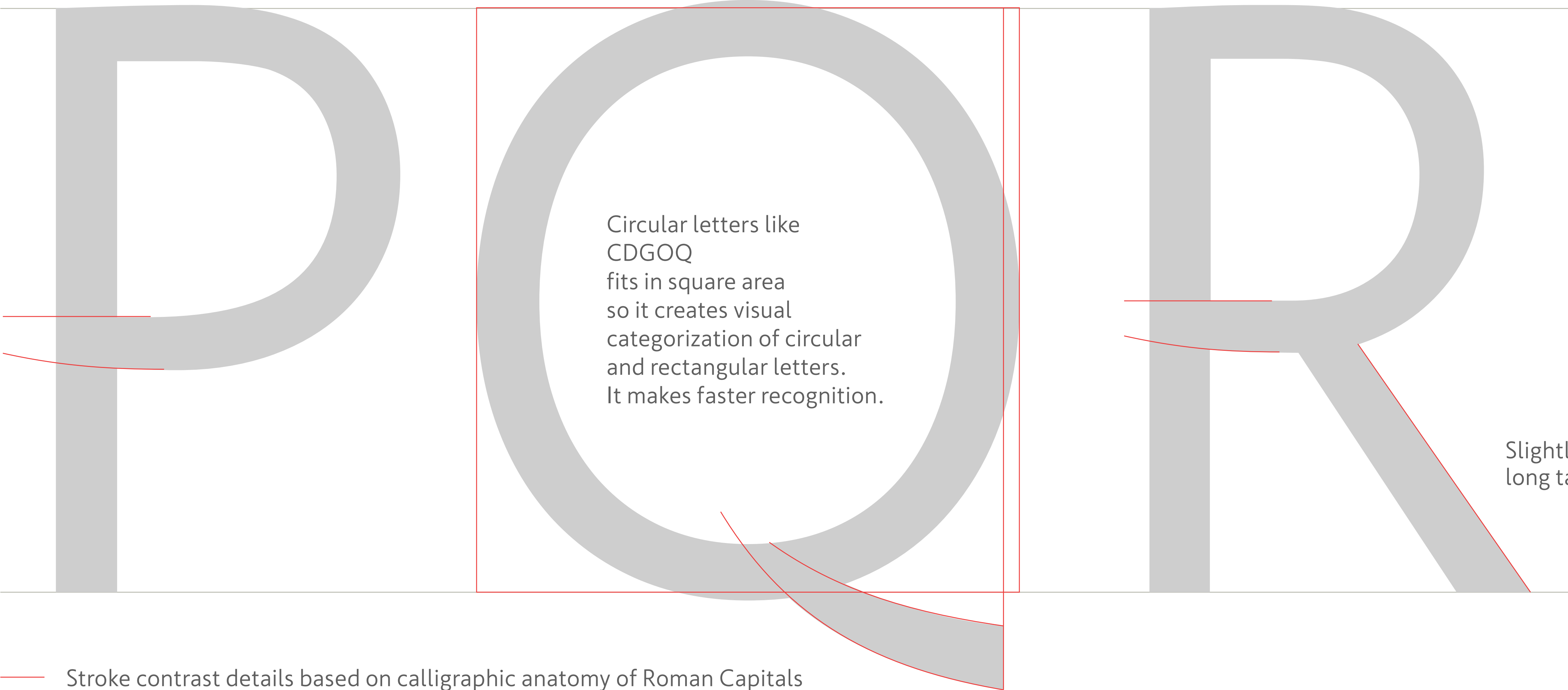


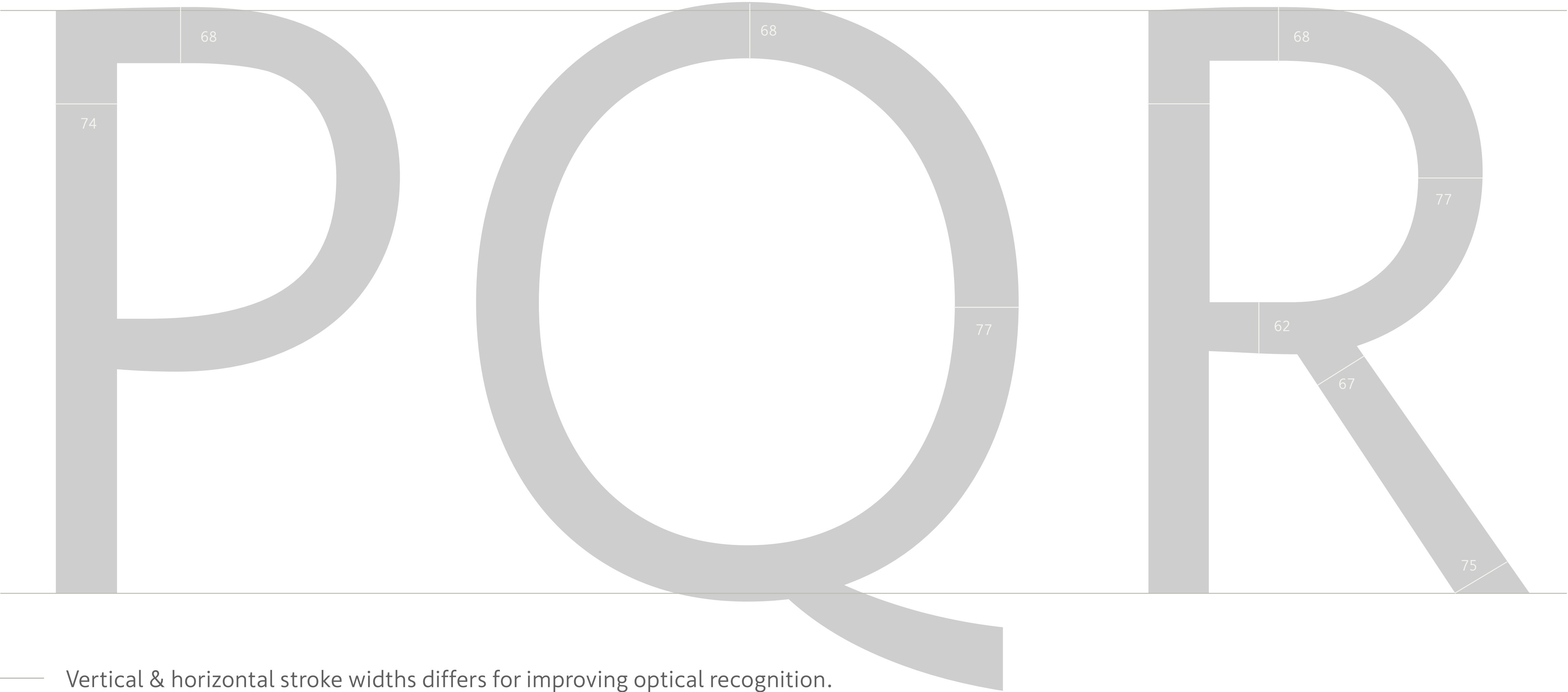
— The Capital skeleton is based on Roman Captalis anatomy which is the first and most recognizable letterforms for human eye.

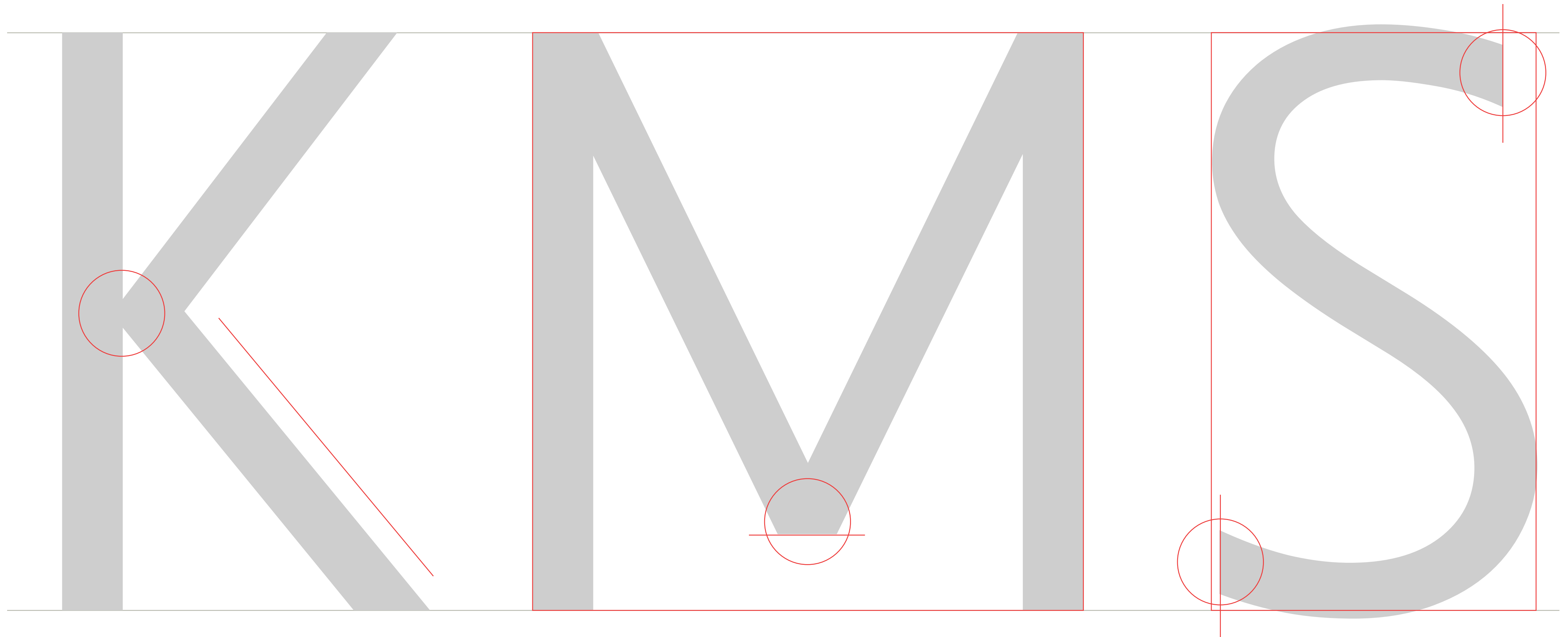


— The Capital skeleton is based on Roman Captalis anatomy which is the first and most recognizable letterforms for human eye.









Angular  
connection

Slightly  
long tails.

Low “crotch” but not touching to baseline.

Vertical Terminals

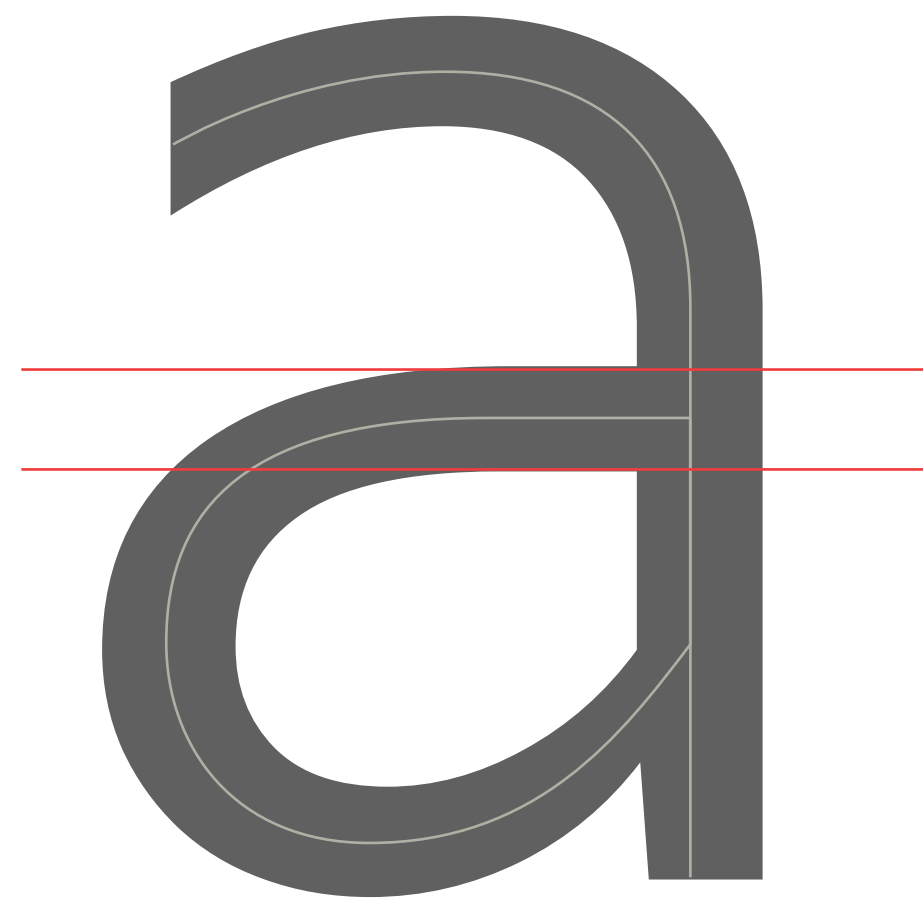
LOREM IPSUM DOLOR SIT AMET, CONSECTETUR ADIPISCING ELIT, SED DO EIUSMOD TEMPOR INCIDIDUNT UT LABORE ET DOLORE MAGNA ALIQUA. EXCEPTEUR SINT OCCAECAT CUPIDATAT NON PROIDENT, SUNT IN CULPA QUI OFFICIA DESE-  
RUNT MOLLIT ANIM ID EST LABORUM.

# ANATOMY OF MINISCULE →

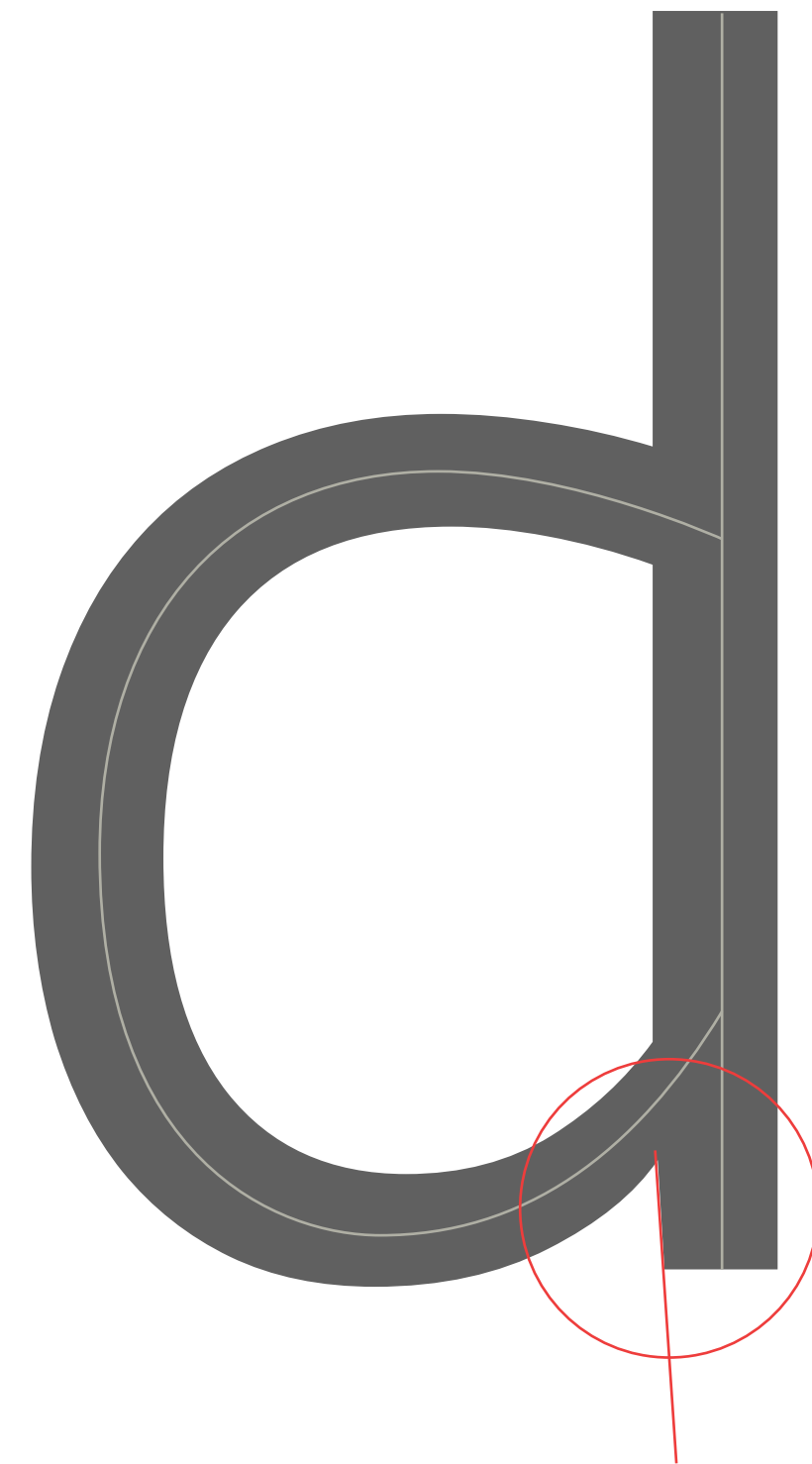
a b c d e f g h i j k l m n

o p q r s t u v w x y z

The miniscule skeleton is based on humanist san serif with an influence of calligraphic strokes.



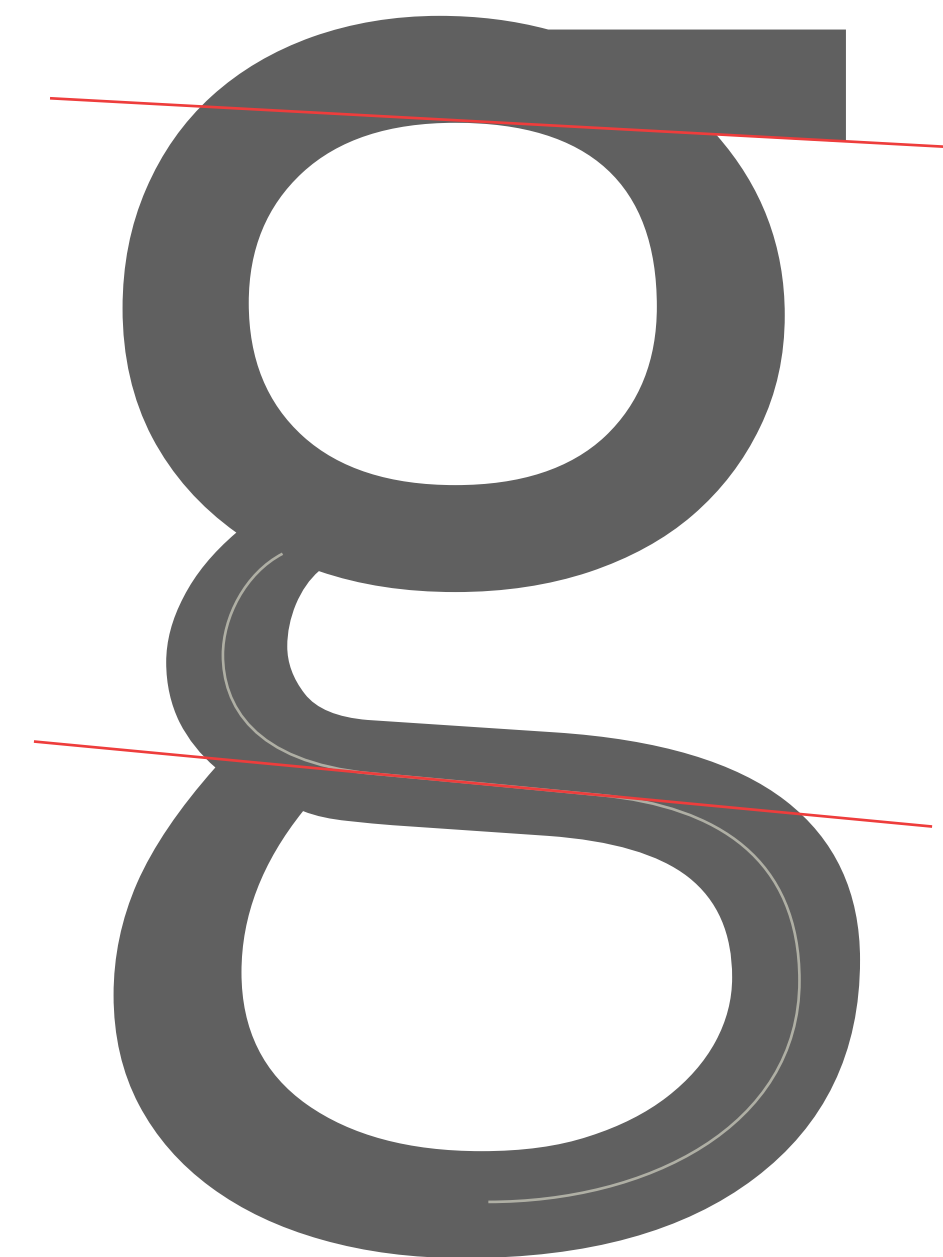
Horizontal bowl  
connection to  
the stem.



Diagonal spur  
cut



Calligraphic  
path of e eye.

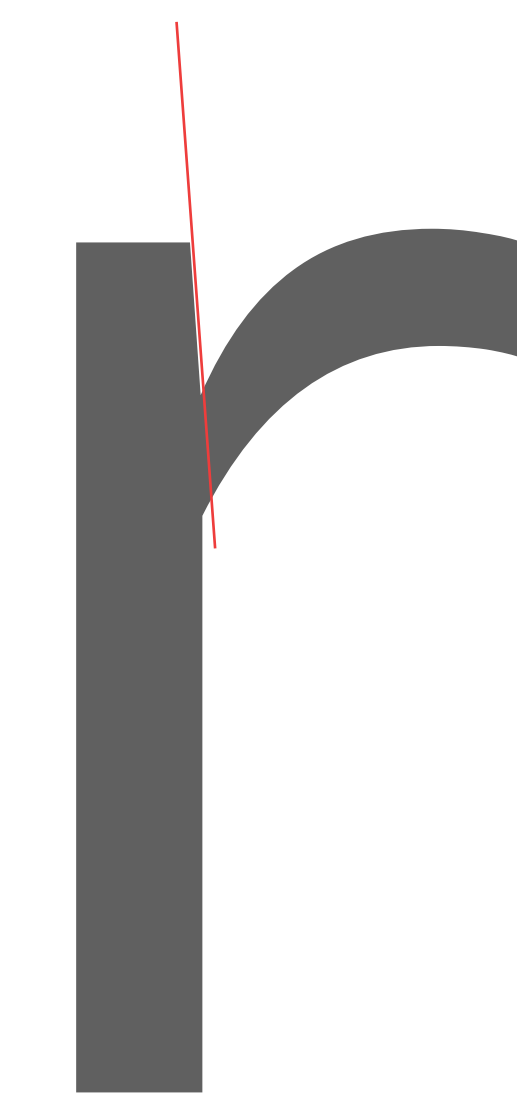
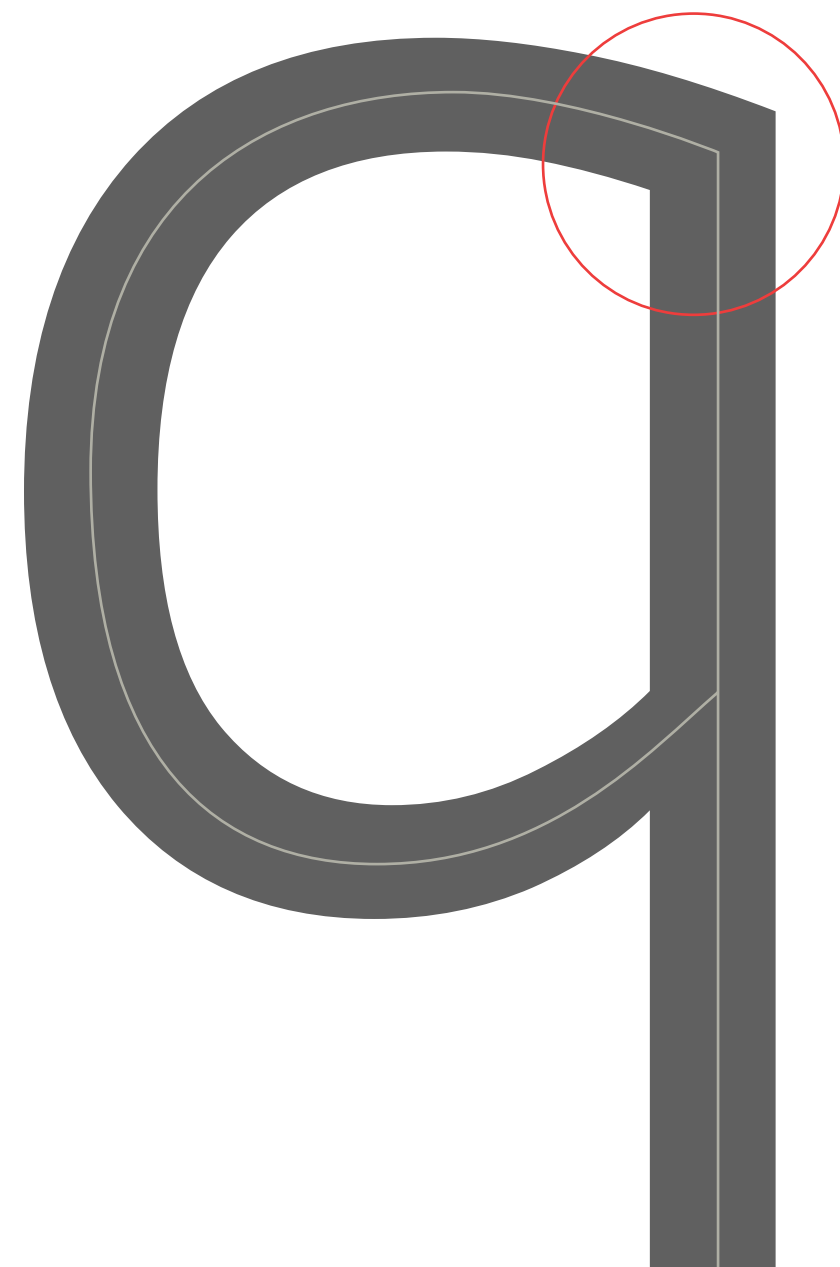


Sloped  
connection to  
“g” loop

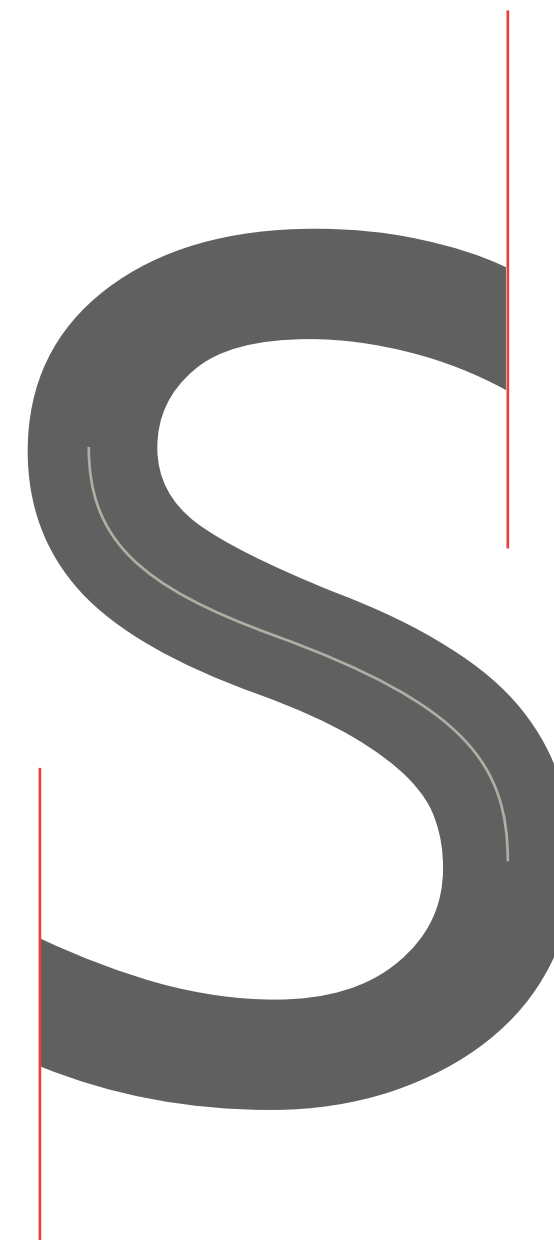


“l” with  
curved finial.

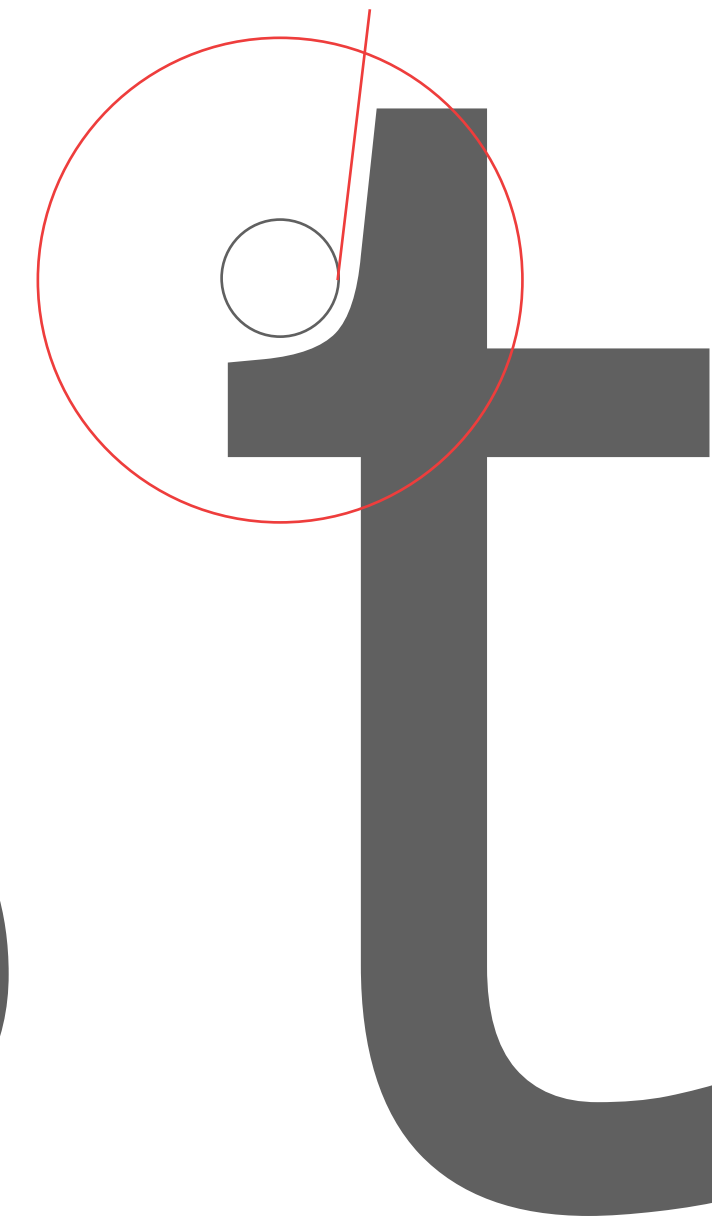
Spurless connection  
to the stem.



Vertical cut on  
terminals



Vertical cuts on  
terminals



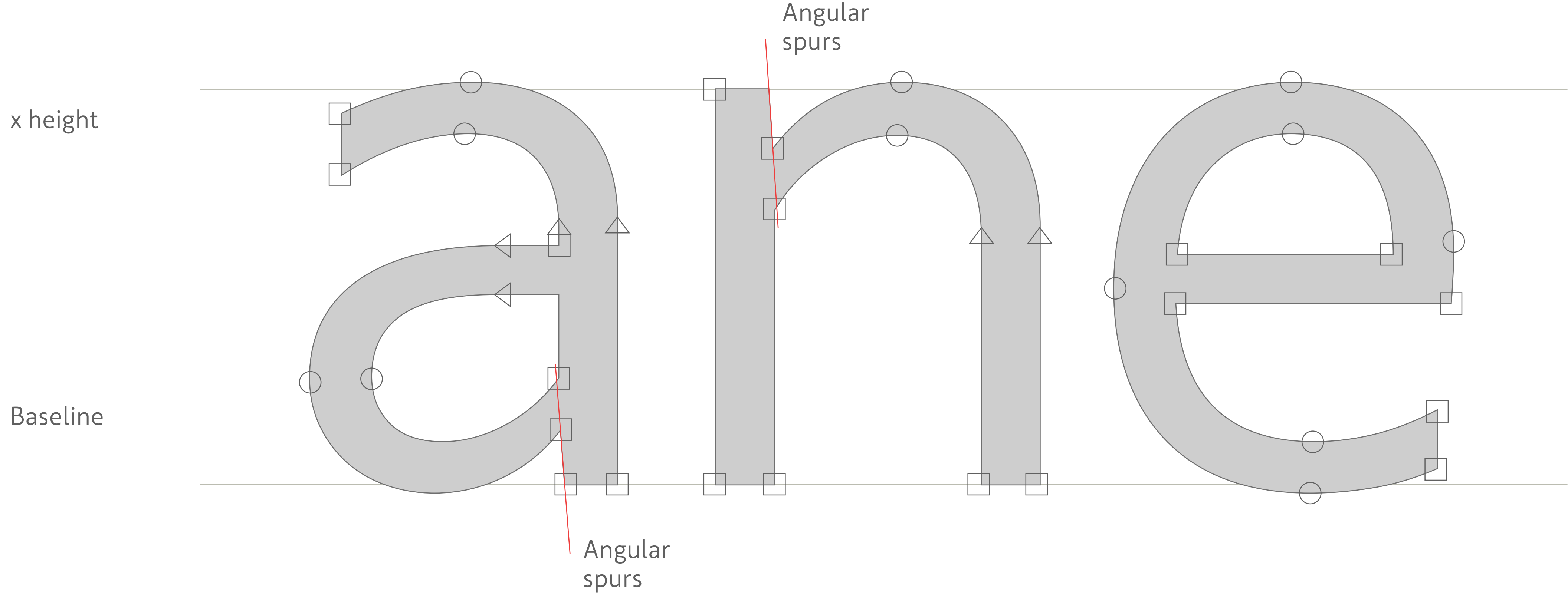
Rounded  
transition on the  
cross of "t"



ANATOMY OF MINISCULE

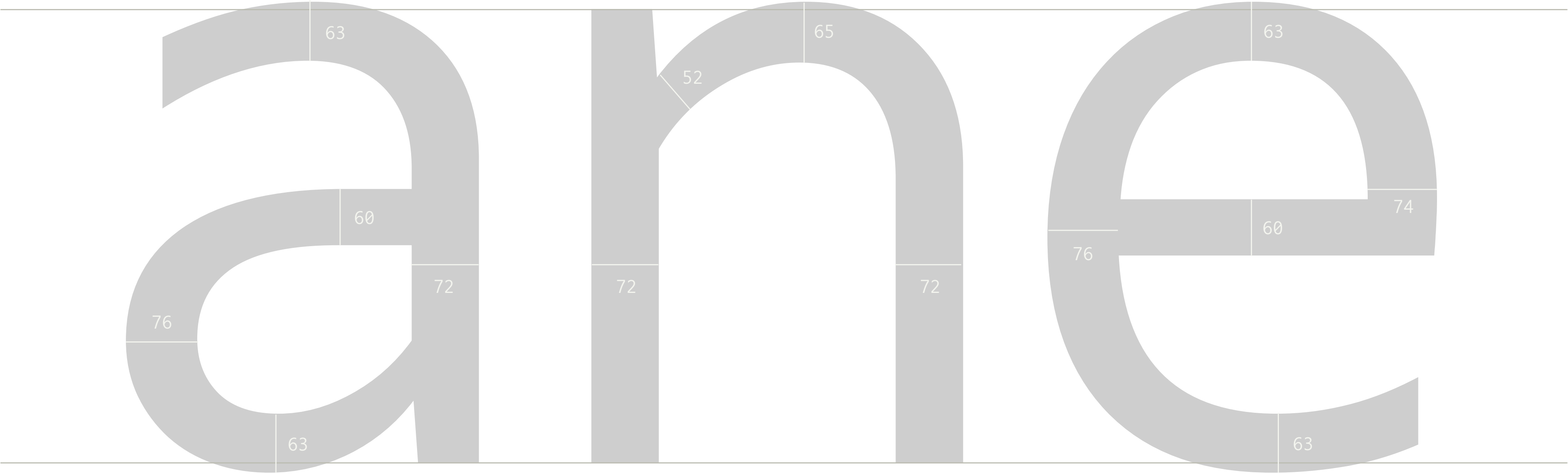


ANATOMY OF MINISCULE



x height

Baseline



Moderate contrast strokes

The two storey “a” and “g” is used in the character set to increase recognition of letters. Two storey forms have unique shapes which can not be confused with any other letter in fast reading.



a g

EXAMPLE

argentina

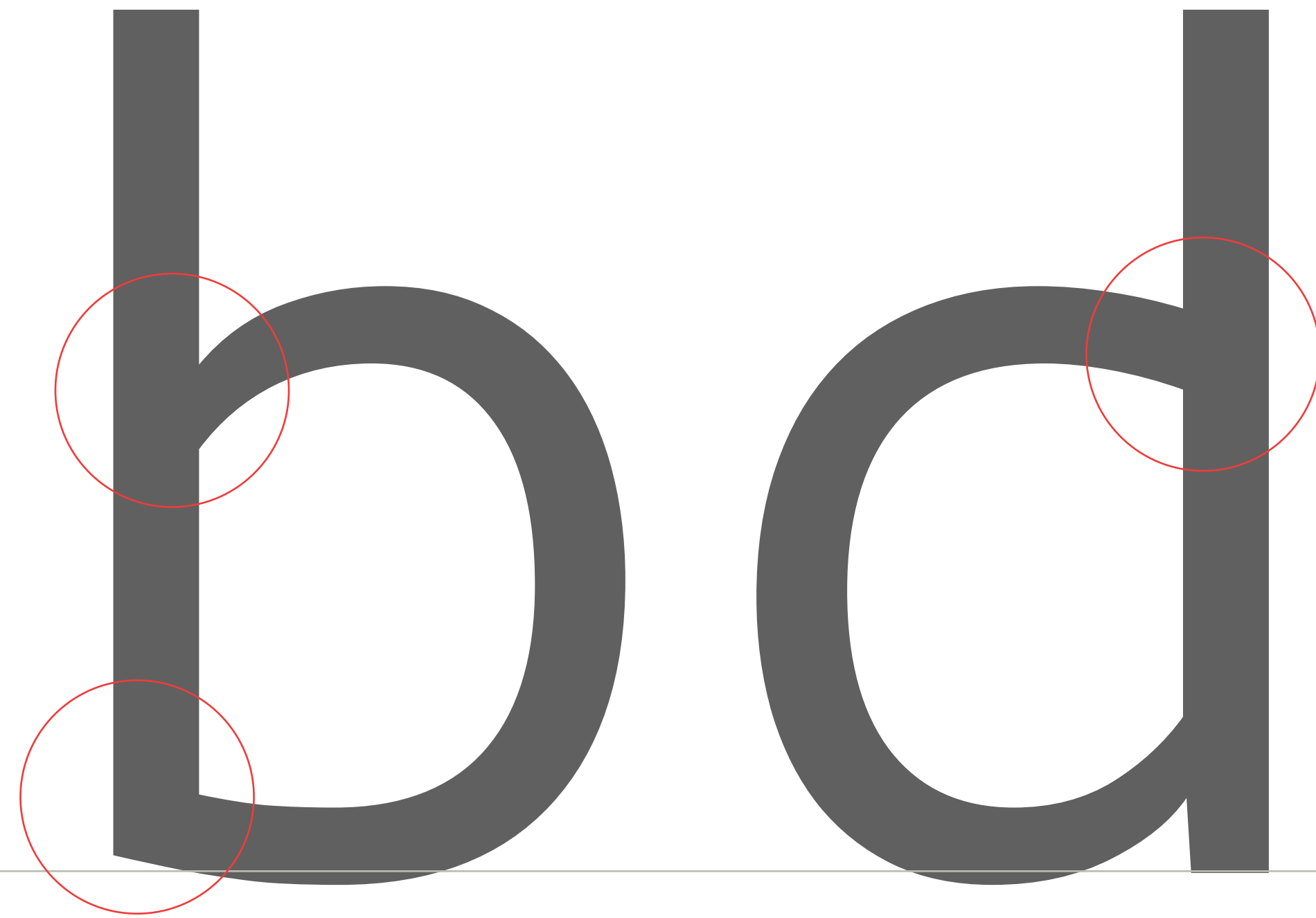
Open apertures in the letters like c,e,s to get faster recognition. Open apertures makes relaxed white zones and prevents confusing with other rounded letters like g,m,n,o,p,q.



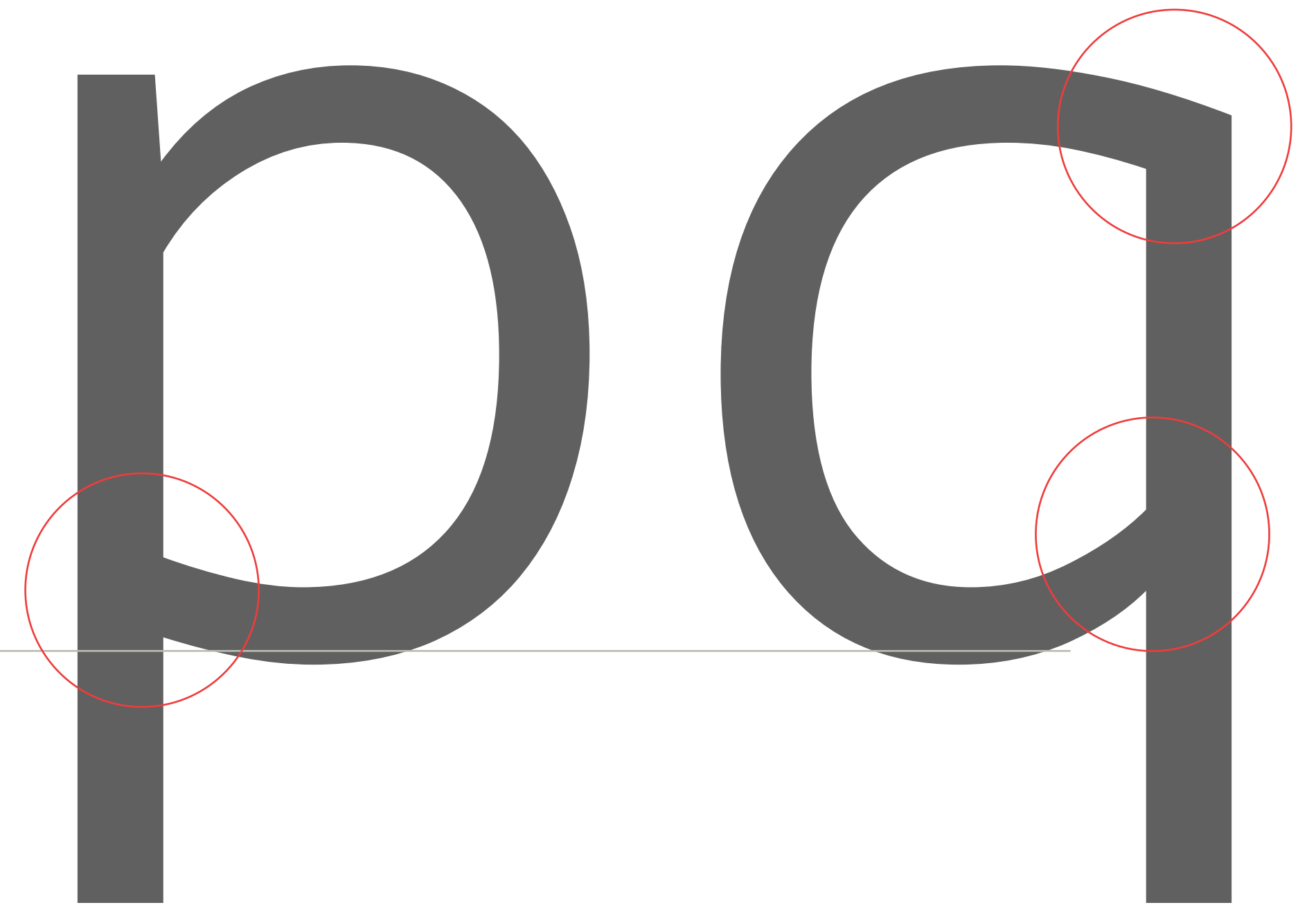
A diagram illustrating the concept of open apertures in lowercase letters. The letters 'c', 'e', and 's' are shown in a dark gray, sans-serif font. Each letter has a vertical dashed red line extending from its right side, indicating the open aperture. The letters are positioned above a horizontal gray line.

EXAMPLE

performances



No spur on the letters “b” and “q” to differentiate letters. This makes better recognition. Prevents confusing letters in fast reading.



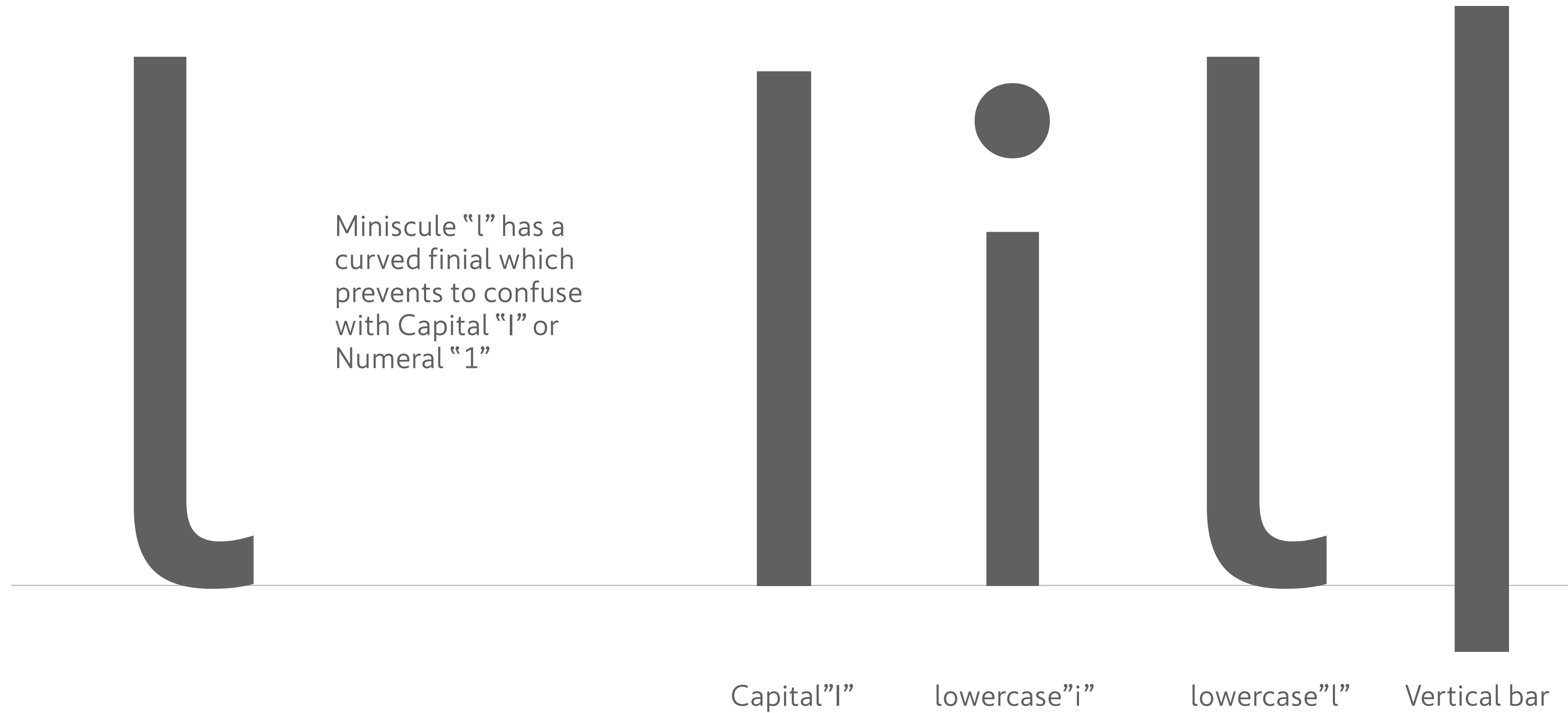
Letters are not mirrored in InfoRiver font due to calligraphic reasons. This helps eye tracking and faster recognition of letters.

EXAMPLE

abandoned

parquet

## ANATOMY OF MINISCULE



## EXAMPLE

Most known word of this confusing is shown here.

Illinois

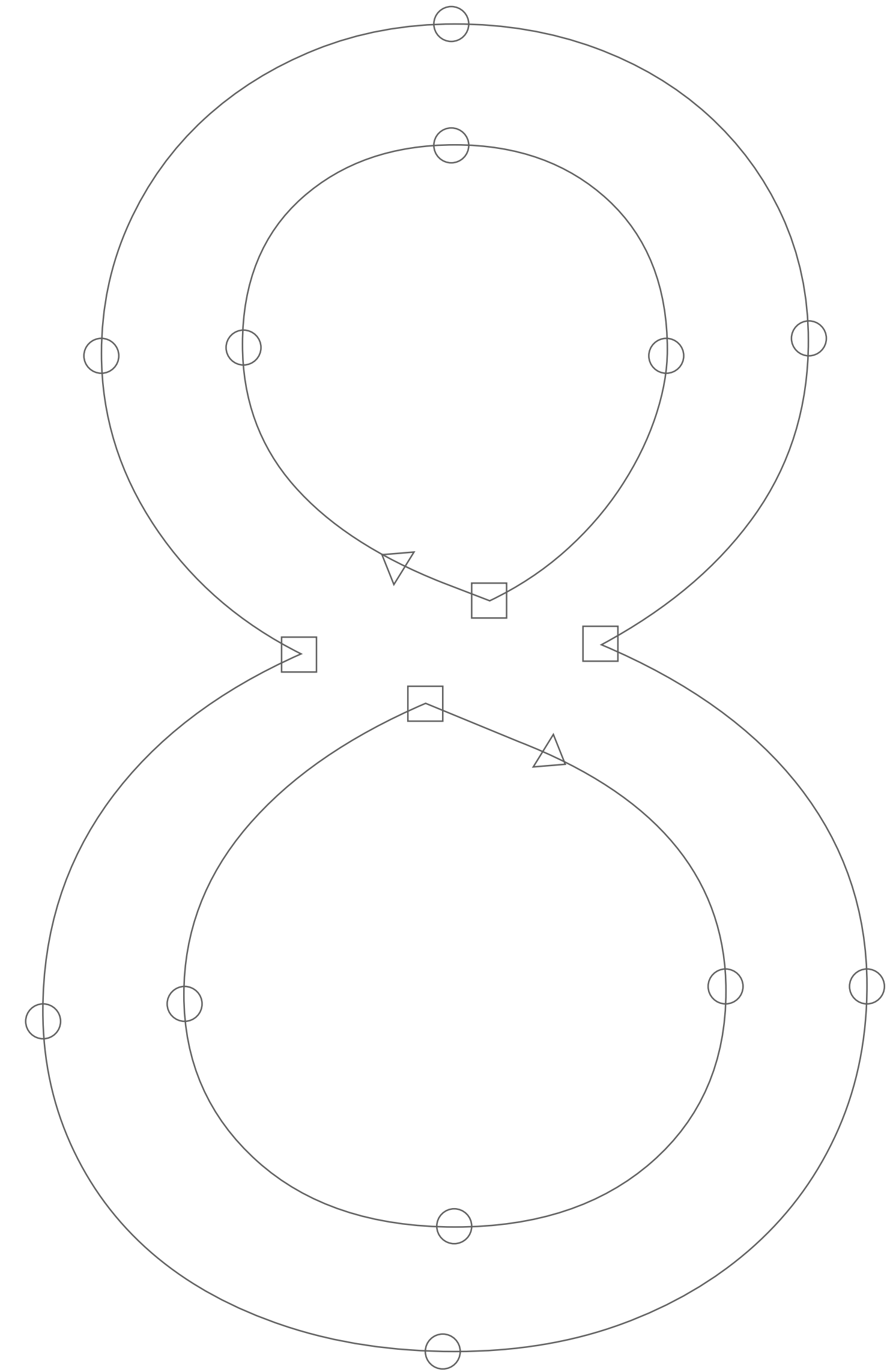
Font:  
Inforiver

# ANATOMY OF NUMBERS →




1 2 3 4 5  
6 7 8 9 0

Numbers are based on the most conversant anatomy which is based on calligraphic forms since Latin alphabet exist.



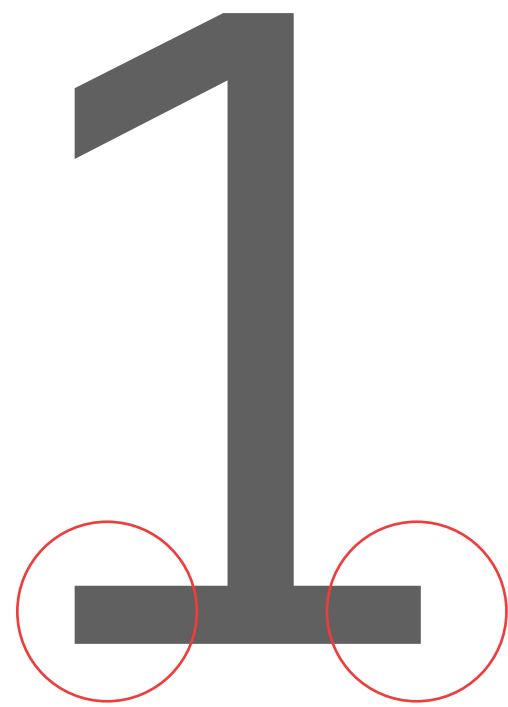
## NUMBERS

Numbers are set in equal width. So they align vertically in table use.

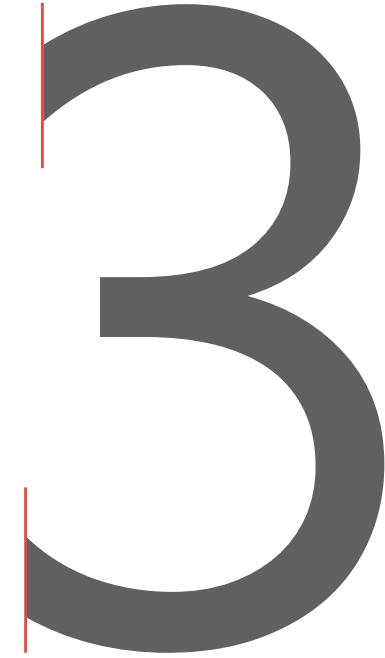


The diagram illustrates a table layout for numbers 1 through 0. Above the table, five horizontal double-headed arrows indicate that each column has an equal width of 540 upm. The table itself consists of two rows and five columns, with each cell containing a number. The numbers are 1, 2, 3, 4, 5 in the first row and 6, 7, 8, 9, 0 in the second row. The numbers are rendered in a dark gray, serif font. The table is outlined with a thin red border.

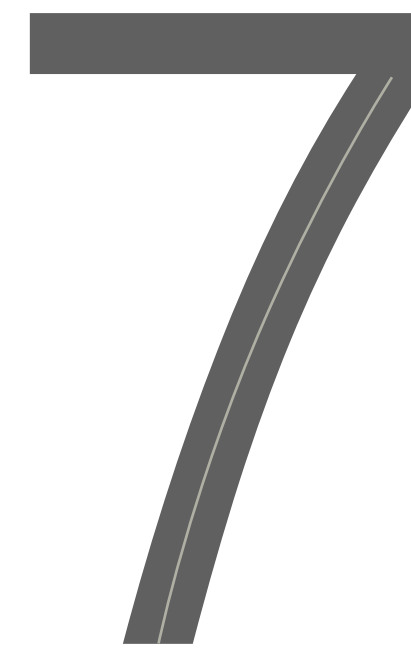
1	2	3	4	5
6	7	8	9	0



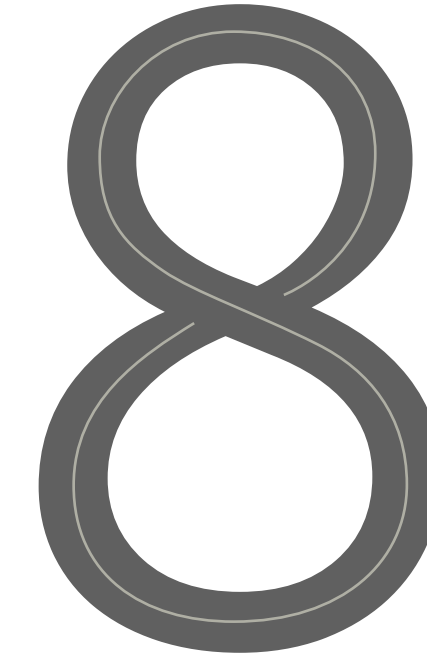
Foots are included to compensate the the empty space in letter box optically.



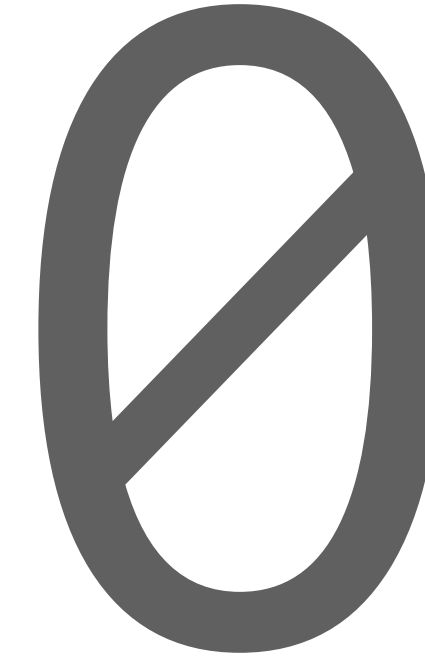
Vertical terminals



Curved Leg makes humanist touch and consistent feel in the family.



Body is constructed on calligraphic roots.



Zero is slashed

Open  
apertures to  
increase  
legibility

2 3 5 6 9

3572946593

4068513453

0408756

146.4

74.2

69.2

254,4

127,9

69,8

Period and comma works like  
monospaced with numbers but it is  
spaced proportionally with letters.

---

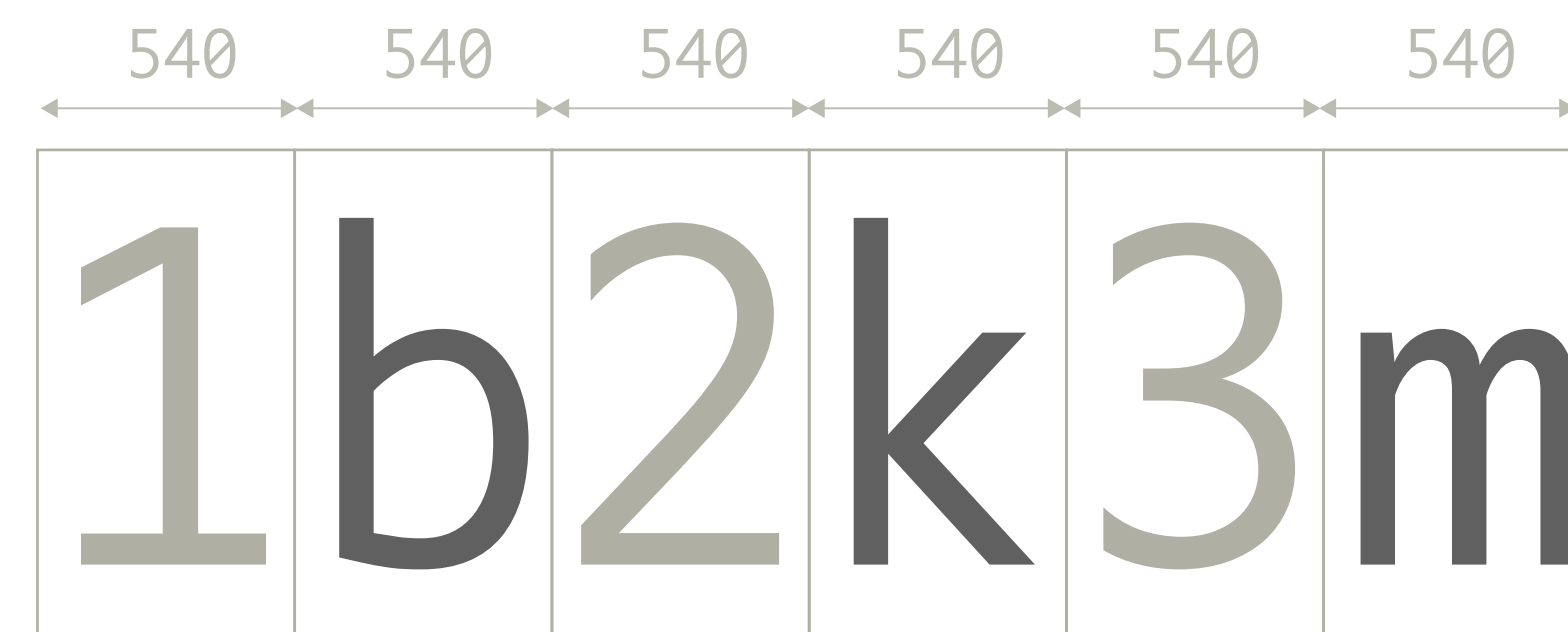
3	.	7	2	9	.	4	6	5	4
0	.	6	8	5	,	1	3	5	,
						3	0	4	.
						0	8	7	

Lorem ipsum dolor sit  
amet, adipisicing elit.  
173.928.874.00  
735,845,909,30

Proportional decimals  
with letters

Monospaced decimals  
with numbers

# Contextual alternate letters working with numbers only.



With special opentype coding, alternative monospaced “b,k,m” letters get activate when used sequentially with numbers.

Contextual Alternate letters

-	1	5	7	.	7	1	m
					6	.	49k
					7	.	30b
-	6	0	1	.	5	5	b
-	6	7	.	5	0	m	
-	2	0	9	.	5	5	k
-	4	0	5	.	5	0	m

# READIBILITY & LEGIBILITY →

## READABILITY & LEGIBILITY

### NUMBERS

Font: InfoRiver

2 3 5 6 9 0

2 3 5 6 9 0

Font: Helvetica

2 3 5 6 9 0

2 3 5 6 9 0

Font: Segoe UI

2 3 5 6 9 0

2 3 5 6 9 0

Font: Gotham

2 3 5 6 9 0

2 3 5 6 9 0

Open apertures help recognize the numbers even they are blocked.



READABILITY & LEGIBILITY

LETTERS

Font: InfoRiver

a b c e g p q r s

Font: Segoe UI

a b c e g p q r s

Font: Helvetica

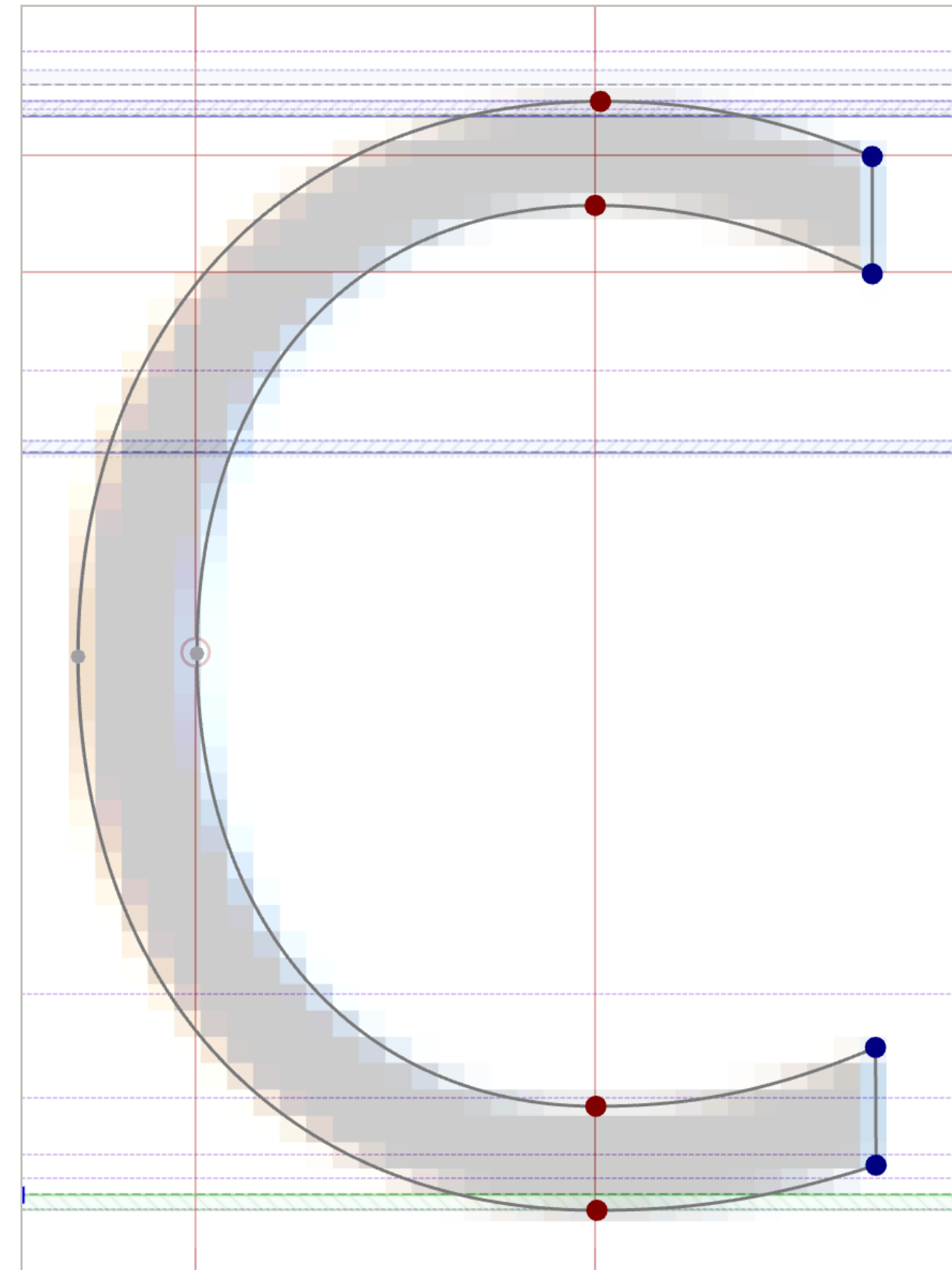
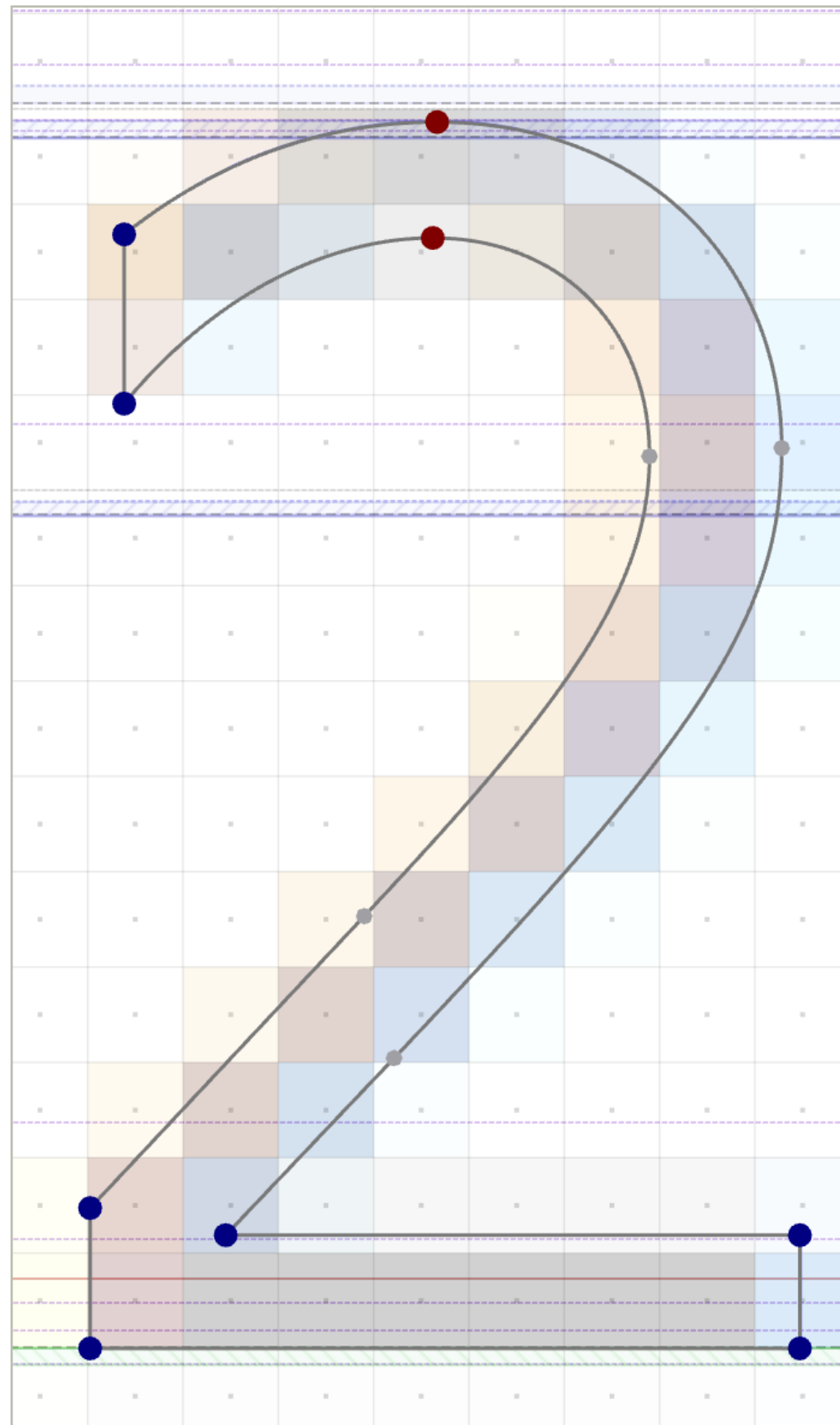
a b c e g p q r s

Font: Gotham

a b c e g p q r s

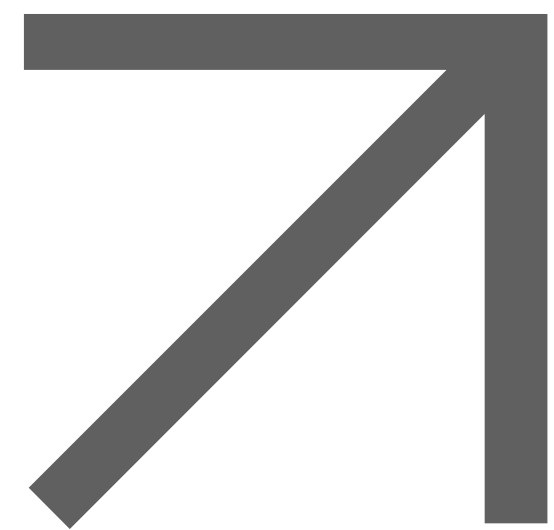
## READABILITY & LEGIBILITY

### PIXEL RASTERIZATION



Vertical terminals  
provides vertically  
aligned sharp pixel  
rasterization in  
smaller sizes.

THE BEST OF EVERYTHING IN BI,  
CPM + EPM, WITH CUTTING-EDGE  
VISUALIZATION, ANALYSIS, GOVERNANCE,  
AND COLLABORATION.



INFORIVER DELIVERS THE FASTEST WAY TO BUILD COLLABORATIVE REPORTS IN POWER BI THROUGH A SEAMLESS LOW-CODE / NO-CODE EXPERIENCE. THE PRODUCT IS DEVELOPED BY LUMEL TECHNOLOGIES, WHICH HAS A DECADE OF EXPERIENCE IN BUILDING VISUALIZATION PRODUCTS INCLUDING VALQ, XVIZ AND BI HUB.

Inforiver delivers the fastest way to build collaborative reports in power bi through a seamless low-code / no-code experience.

At Lumel, we plan, design and build inclusive strategic products for our customers leveraging our expertise in Data & Analytics solution spectrum. We work with your executives, business users and analytics teams by creating the right software that best suit your needs.

Lumel is formed by the Founders of Visual BI Solutions – leaders in building Strategic BI models for Fortune 500 Companies. The acquisition of Visual BI's – Consulting business by Atos, paved way for Lumel – the

company committed to revolutionize the way world looks at data. Our vision is to become one of the leading software provider in the field of Business Intelligence & Analytics.

INFORIVER.OTF

ABCDEFGHIJKLMNOPQRSTUVWXYZ-  
NOPQRSTUVWXYZ-  
VWXYZ  
abcdefghijklmnopqrstuvwxyz-  
nopqrstuvwxyz  
1234567890

1,243.8	All
497.5	Segment A - Cash Cow
254.4	Projectors & Screens
127.9	Laptops
69.8	Lamps
45.6	Air Conditioners
372.3	Segment B - Potential
234.5	Washers & Dryers
48.4	Desktops
47.5	Water Heaters
41.9	Microwaves
374.0	Segment C - Needs Attention
146.4	Refrigerators
74.2	Coffee Machines
69.2	Monitors
45.5	Printers, Scanners & Fax
23.6	Computer Accessories
65.1	Fans

INFORIVER.OTF