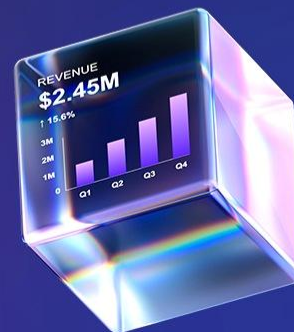




Autonomous Finance Realized

Welcome to the Delegation Era



From Insight to Action in Seconds

Housekeeping



Earn 1 CPE Credit

Answer poll questions and complete the post-event survey to be eligible. QR code at the end of the presentation.



Q&A

Q&A is at the end, but feel free to ask questions throughout the presentation.

Table of Contents

- 1 How finance teams naturally think
- 2 Finance is a Coordinated System
- 3 Accelerating your Time to Value
- 4 Demonstration
- 5 Influence the Product Experience

How do people think?

Let's go grocery shopping



What if...

Produce scattered across 3 different aisles

Prices listed in a separate booklet

Your shopping list isn't organized by layout

That's what most tools feel like — information exists, but it's not organized the way you naturally think.

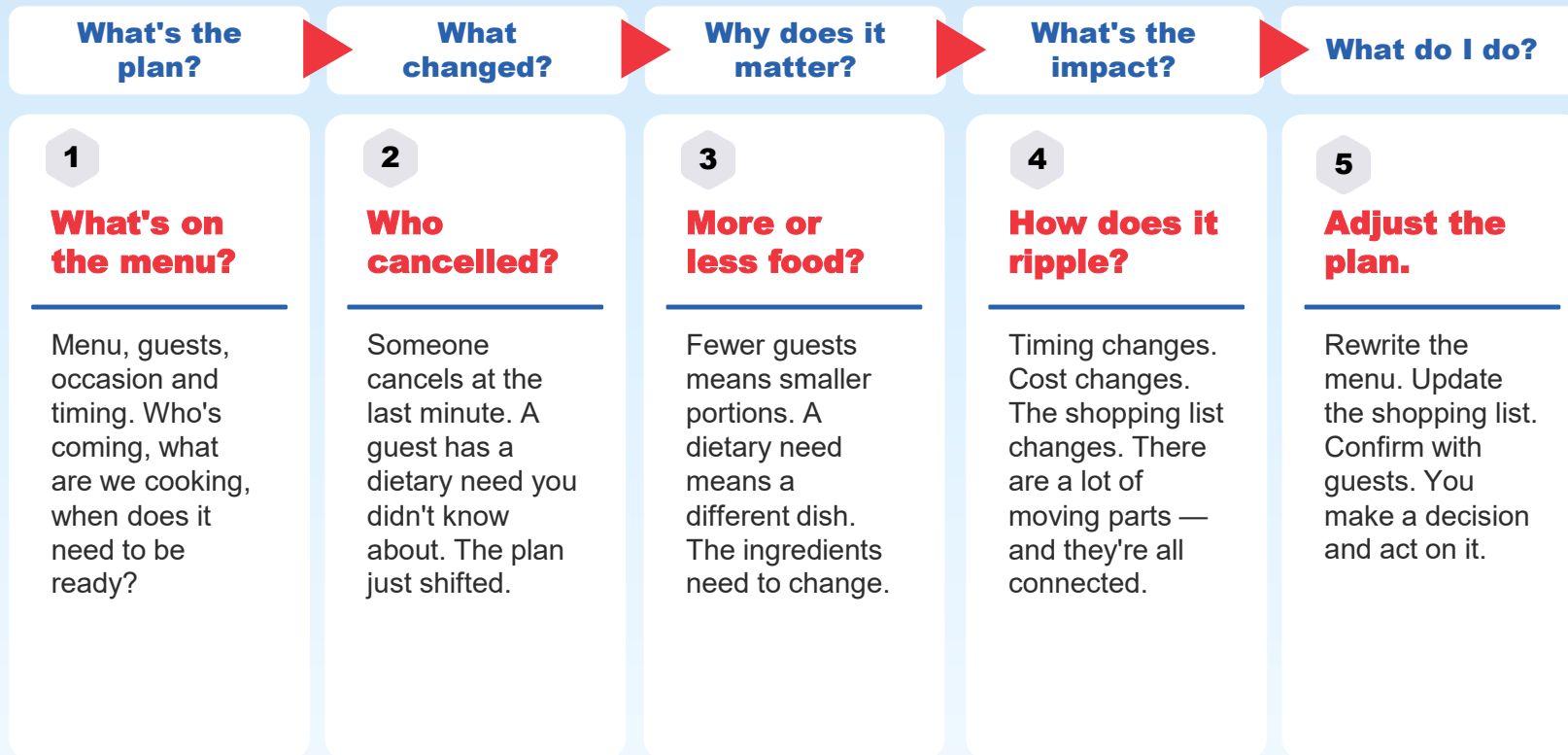
A well-designed store organizes by how you naturally shop — by theme and natural thought patterns



How would you prepare to host a dinner party?



People naturally think in flow

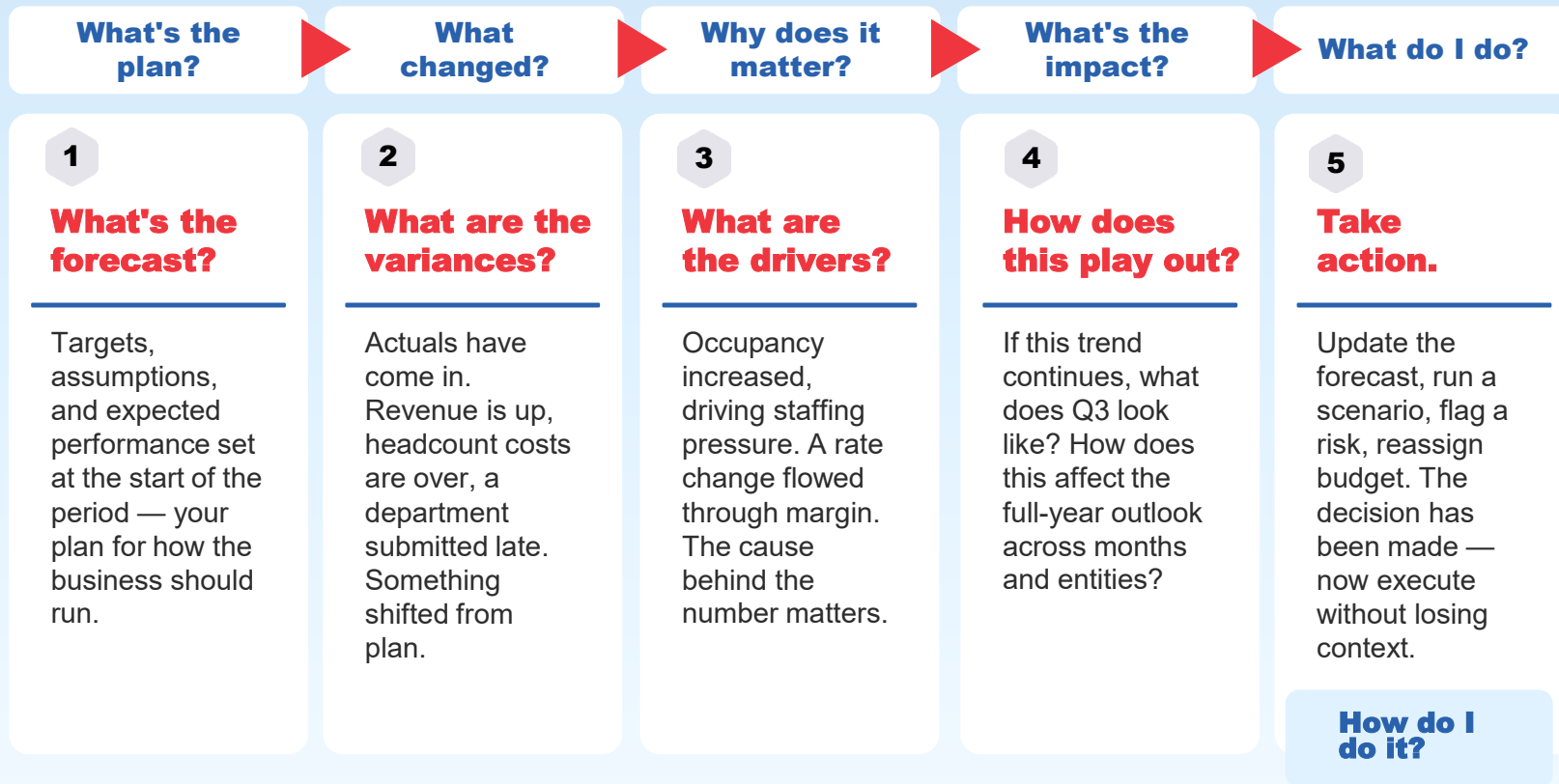


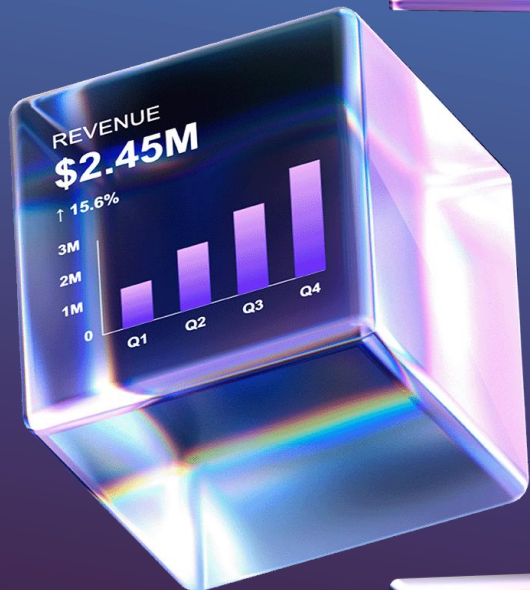
Not too dissimilar from how you manage your financial data



The same flow. Applied to your financial data.

Your planning cycle follows the exact same natural logic.





Where could your current planning experience see improvement in the flow?





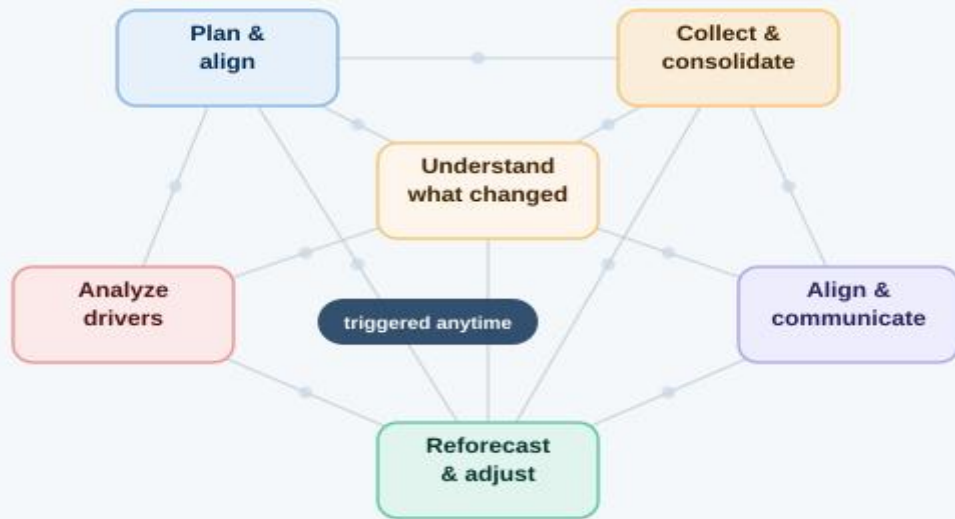
Finance is a coordinated system



Finance is a coordinated system, not a single workflow.

Any part of the system can be triggered at any time — by an event, a submission, a variance, or a decision.

These aren't inefficiencies — they are natural characteristics of the work.



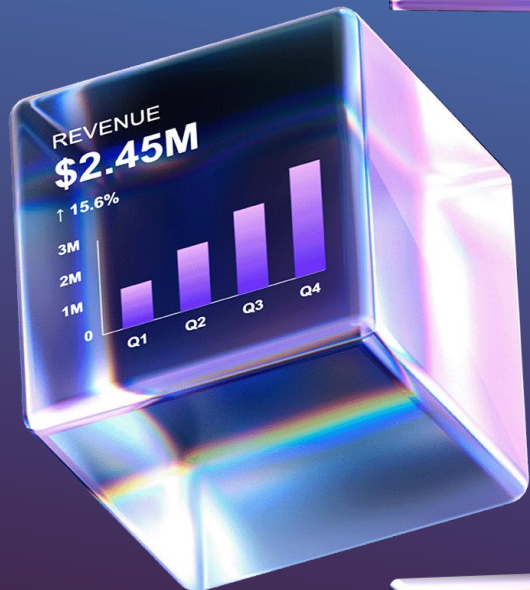
This is why finance feels complex.

A rate change mid-quarter triggers a reforecast before the plan period ends.

A department submits late — suddenly consolidation, analysis, and alignment are all affected at once.

An exec conversation triggers an ad hoc scenario — outside the normal cycle entirely.

A variance surfaces a driver question that kicks off a full reforecast before month end.



**Which of these
core workflows
matter most to
your team?**

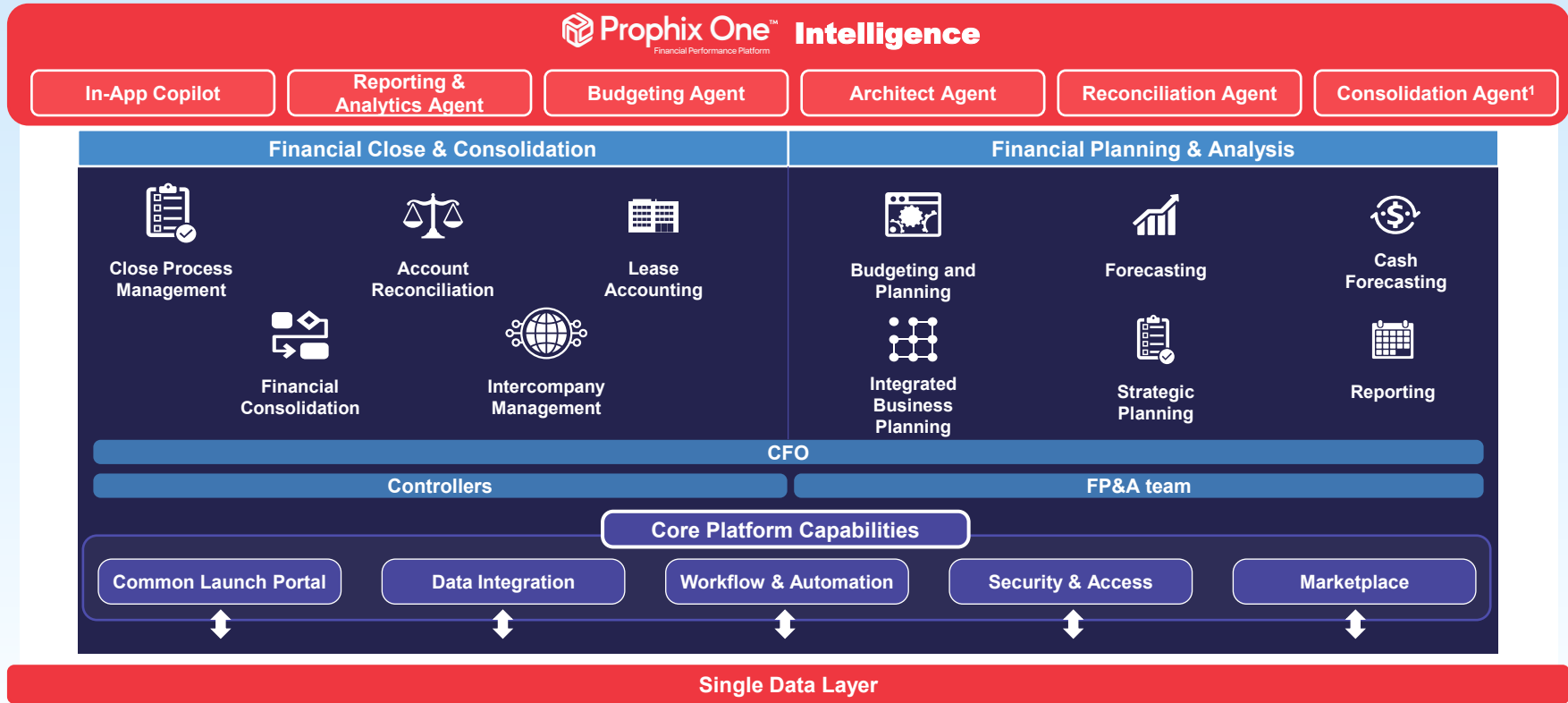




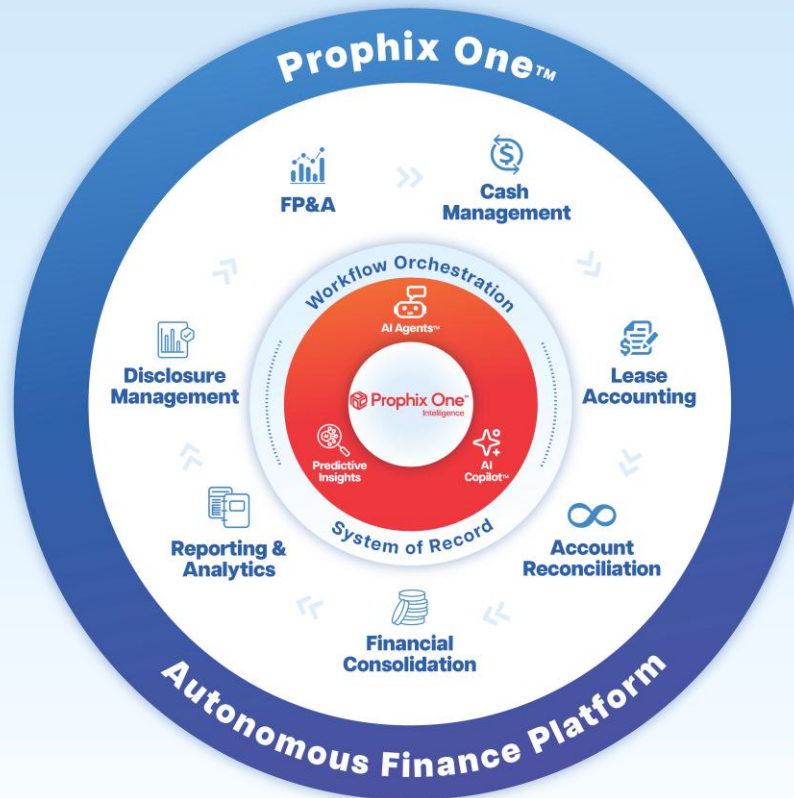
Accelerating your time to value



Prophix One is Increasingly The Most Modern, Scalable, AI-Enabled Platform for the OCFO



Prophix One, a Financial Performance Platform



From Login to Actions

A login page that delivers value you can feel the moment you login

**One place for the
full picture**



**Your team,
in sync**



**Insights that tells
you what to do next**



What you're about to see isn't just a demo, it's how we enable your workday.

Demonstration

The moment you login, everything you need is already there.



What we built together.

We didn't design a better dashboard — we designed a system that thinks the way finance teams think.



Decision-centric experience

Insight → action




Mental model alignment

Built around
how you already think

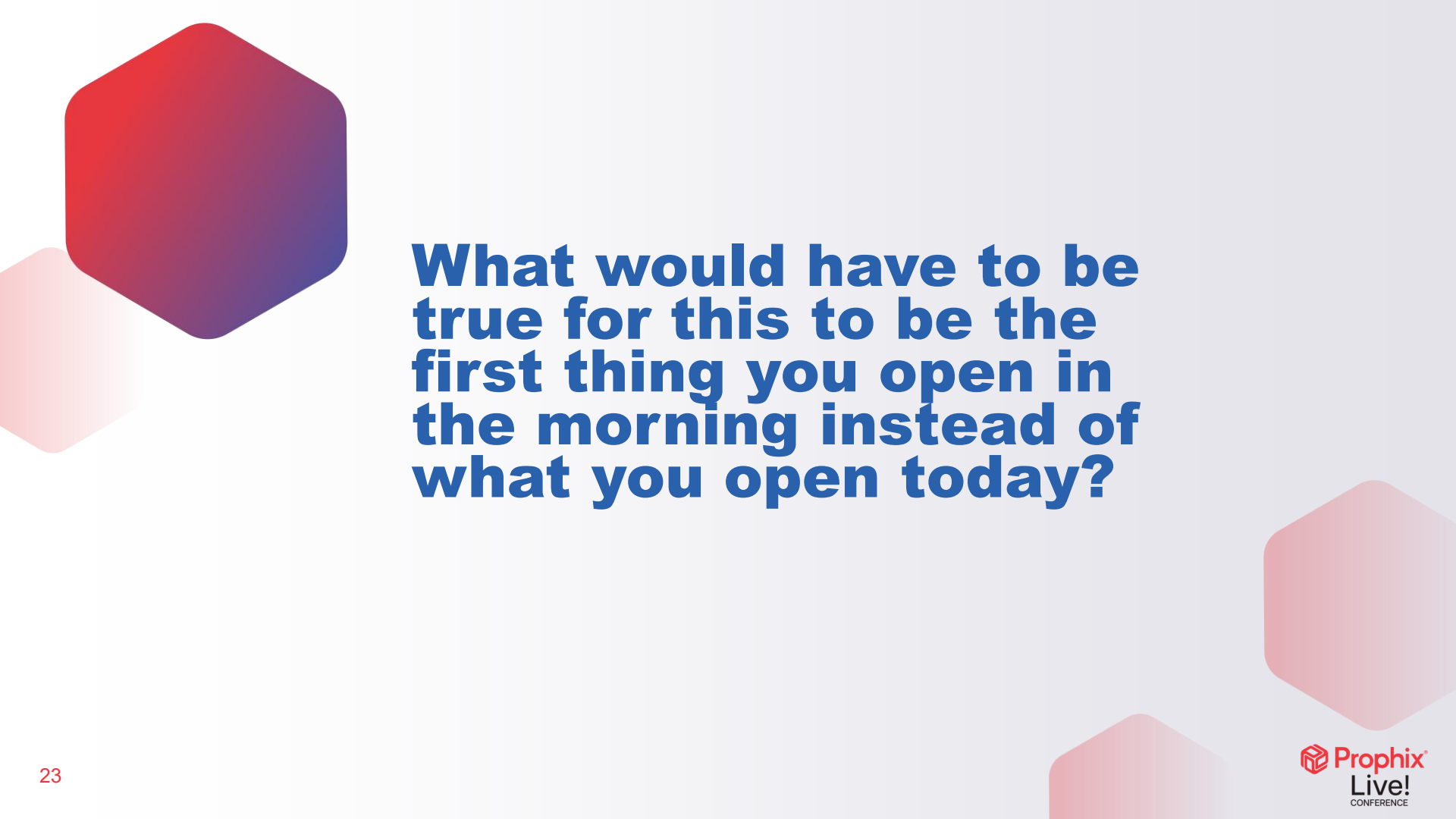


Immediate time to value

From login
to clarity

The slide features a light blue background with several semi-transparent hexagonal shapes. A large, prominent hexagon in the top-left corner has a red-to-purple gradient. Other hexagons in shades of pink and light purple are scattered in the bottom-left and bottom-right corners.

**Tell us what you
think.**



What would have to be true for this to be the first thing you open in the morning instead of what you open today?

What you can do next

Each of these steps will move you closer to the experience you saw today.

Expand your platform

Explore FP&A Plus

Unlock advanced driver-based modelling, expanded scenario planning, and deeper workflow automation — built directly on top of what you use today. **Same data. Same team. Significantly more capability.**



[Download the FP&A Plus comparison guide](#)

Expand your platform

Connect your full platform

Prophix connects planning, consolidation, and reporting into a single environment. Each application you add reduces the number of systems your team has to manage.



[Book a call with your account manager](#)

Have a voice

Join the early access group

Give direct input on the roadmap, test new capabilities before general release, and ensure the product is built around how your team actually works.



This week

Visit the product & design team

We're here at the conference. Come find us, share your experience, and tell us what would make this indispensable for your team.



Your feedback directly shapes what we build next.

Thank you



Scan the QR code and complete
the course evaluation to earn your
CPE credit

Marleigh White

mwhite@prophix.com