



Canada Health Infoway

CA:eReC Working Group

Online meeting
Feb 21, 2024

Topics

Topic	Time (ET)
Update on engagement with Alberta - Russ	10 mins
Orientation to IHE and CA:eReC Technical Specification IG content - Mag	30 mins
Central Intake - Central Intake Conceptual Architectures - Tim B - Intro to Forwarding and Chaining - Jean D	15 mins
Upcoming Topics and Meetings - Mark	5 mins

Update on engagement with Alberta

- Meetings with Alberta team to review workflows:
 - Central Intake & Rapid Access Clinic
 - eConsult (Advice Request)
- Significant similarities to existing flows in Ontario
- Key differences:
 - Vision for role of PoC System, EHR and Referral Management System in eReferral
 - Implications to messaging when PoC systems are used to create and manage referrals
- Next Steps (items on March 6 WG agenda)
 - Review CI flow against to Use Cases in FHIR IG (if needed)
 - Bundle content options analysis

Topics

Topic	Time (ET)
Update on engagement with Alberta - Russ	10 mins
Orientation to IHE and CA:eReC Technical Specification IG content - Mag	30 mins
Central Intake - Central Intake Conceptual Architectures – Tim B - Intro to Forwarding and Chaining – Jean D	15 mins
Upcoming Topics and Meetings - Mark	5 mins

IHE

IHE – Integrating Healthcare Enterprise

Set of technical specifications that enable healthcare systems to interoperate with each other

- **Implementable specifications** – building blocks based on established standards
- **Ease of communication** – concepts that are well defined and documented
- **Conformance testability** – modular approach that allows implementing distinct parts of the specification

Core concepts

- **Actor** – software system that plays a specific role in the exchange of healthcare information
- **Transaction** – interaction or exchange of information between healthcare systems
- **Integration Profile** – specifications for a specific set of Use Cases, based on the Actor and Transaction paradigm

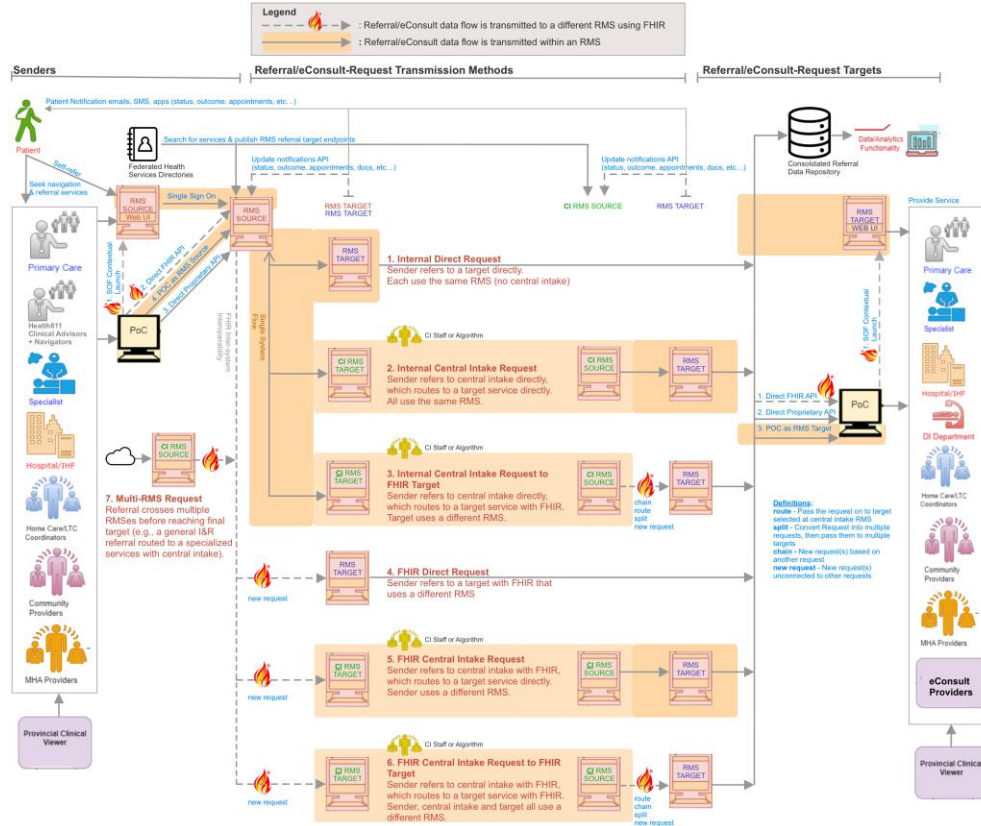
<https://profiles.ihe.net/index.html>

<https://wiki.ihe.net/index.php/Profiles>

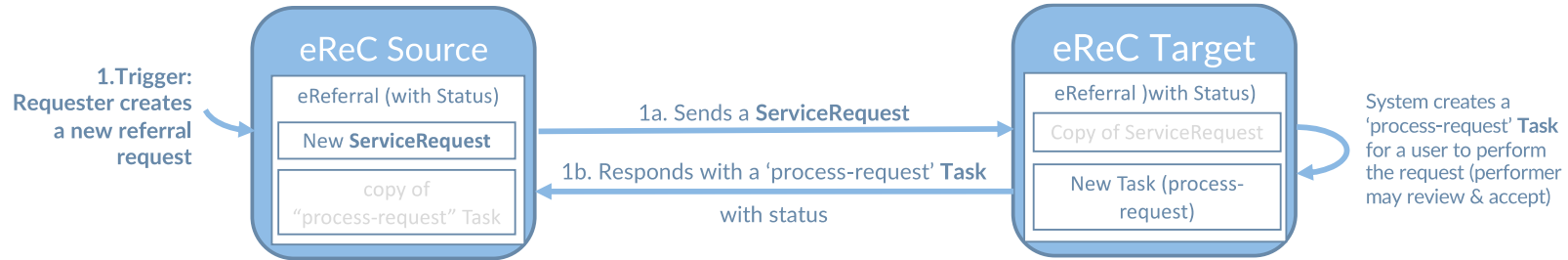
Topics

Topic	Time (ET)
Update on engagement with Alberta - Russ	10 mins
Orientation to IHE and CA:eReC Technical Specification content - Mag	30 mins
Central Intake - Central Intake Conceptual Architectures – Tim B - Intro to Forwarding and Chaining – Jean D	15 mins
Upcoming Topics and Meetings - Mark	5 mins

Central Intake Conceptual Architectures

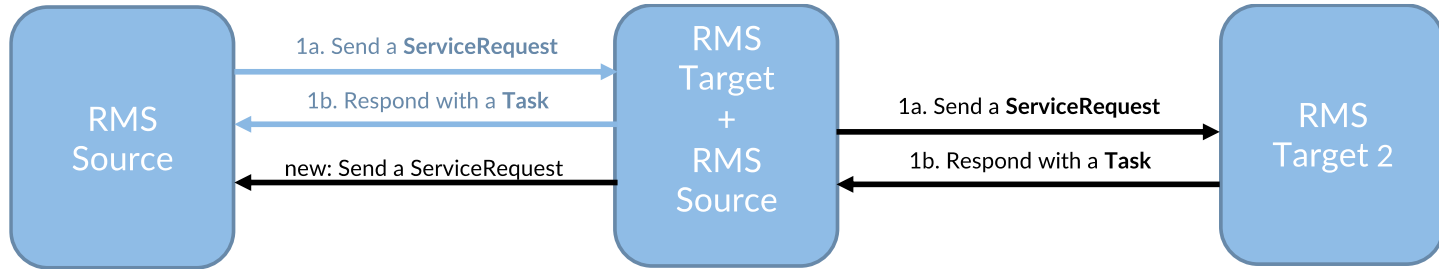


eReferral: ServiceRequest & Task (process-request)



#	Trigger Event	Event Code (link to Payload)	Focus (link FHIR Profile)	Source	Destination
1a.	Requester creates and sends a ServiceRequest	add-service-request	ServiceRequest	RMSSource	RMSTarget
1b.	Performer responds with a Task (process-request) to track Status	notify-add-process-request	Task (process-request)¹	RMSTarget	RMSSource

Routing & Chaining



Two key concepts (not yet fully represented in the guides)

- Routing: When routing, the ServiceRequest is **updated** with a new recipient. CI would send back a ServiceRequest that **replaces** the original.
- Chaining: When chaining, a **new** ServiceRequest is created. The RAC would send back a new ServiceRequest that is basedOn the original.

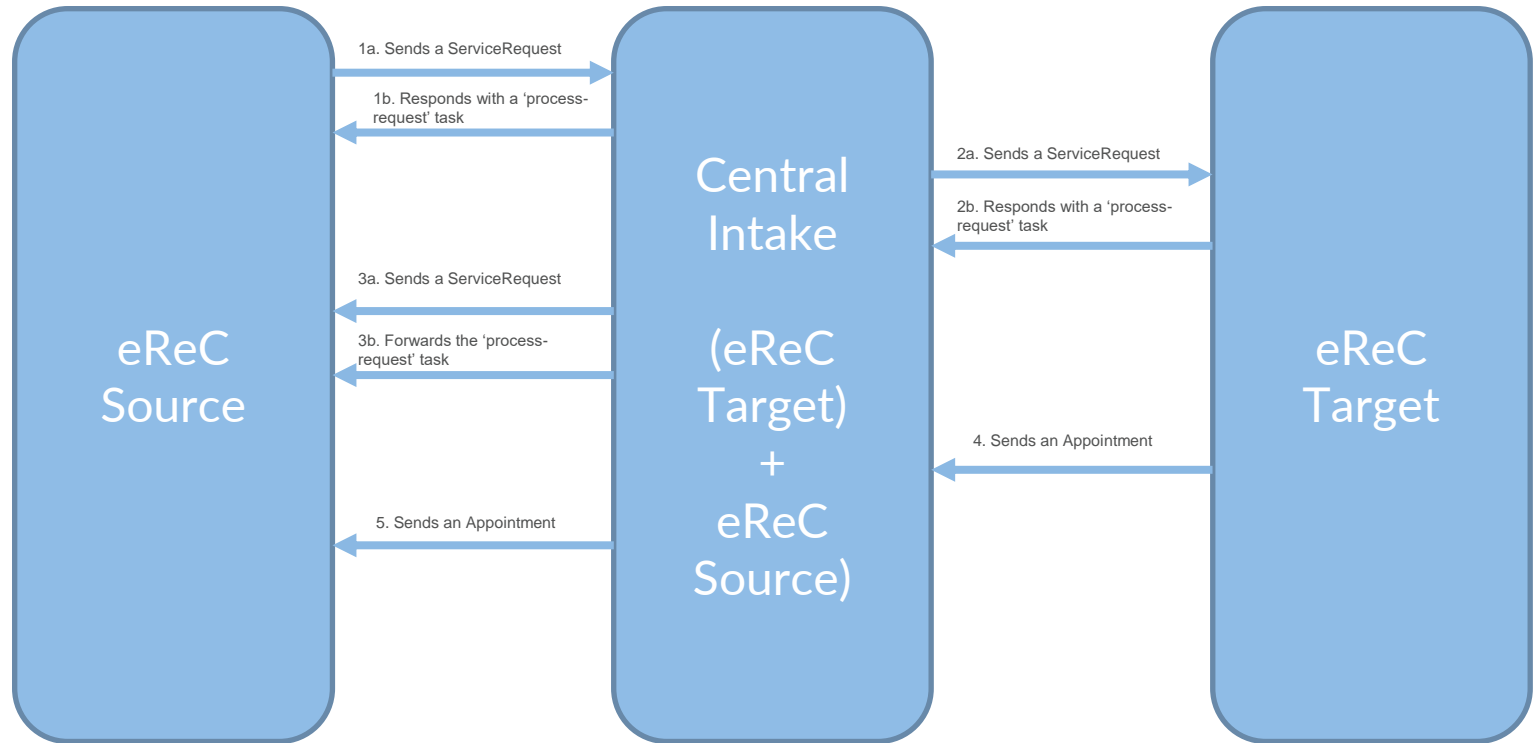
Event	Category	Purpose	Allowed Responses	Response Situation
add-service-request	consequence	To request that a ServiceRequest created on the RMS Source be performed on an RMS Target.	notify-add-process-request	When the request is successfully processed, a 'process-request' Task with status SHALL be returned to the requester.
notify-add-service-request	notification	To notify systems other than the RMS Target that a new ServiceRequest has been created.		

For more information see: [Route-Chain-Split Design Document](#)

Routing

- eReferral is received and passed to a new handler/destination
- e.g.
 - PCP sends a referral for diabetes education central intake
 - Central Intake sends referral to the next available educator
 - Educator accepts the referral
 - Educator books an appointment
 - Education sees the patient and completes the diabetes education

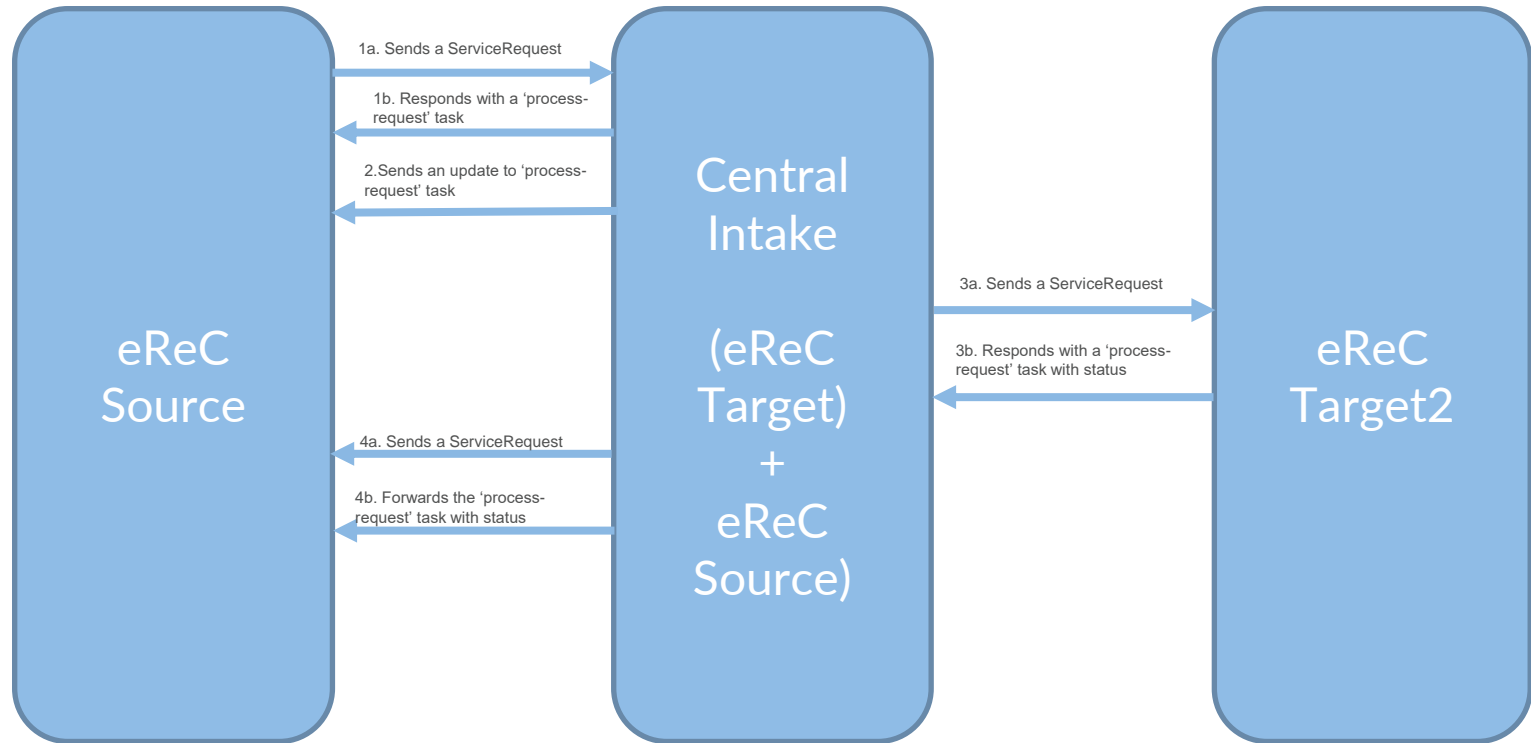
Routing



Chaining

- A referral is received and a service is performed that results in new distinct requests for downstream services.
- e.g.
 - PCP sends referral to regional MSK CI/RAC
 - CI/RAC assesses patient, determines surgery is needed
 - RAC sends referral to orthopedic surgeon
 - Surgeon accepts referral
 - Etc.

Chaining



Term	Definition	Example	Required Elements
Routing	<p>A referral is received and passed to a new handler or destination as the <i>*same*</i> referral.</p> <p>Routing occurs <i>*before*</i> the services are performed.</p>	<ol style="list-style-type: none"> 1. Referral to Central Intake (CI) 2. CI routes request to the service provider with shortest wait time. 	<p>1:1 relationship between parent and child ServiceRequests where:</p> <ul style="list-style-type: none"> - ServiceRequest.identifier: business identifier shared between parent and child - ServiceRequest.requisition: business identifier shared between parent and child, once set cannot be changed - ServiceRequest.replaces: populated in child with parent - ServiceRequest.basedOn: not used - ServiceRequest.status: used to designate that a ServiceRequest has been replaced.
Chaining	<p>A referral is received and a service is performed that results in one or more additional <i>*new distinct*</i> requests for downstream services created to fulfill the initially requested service.</p> <p>Chaining occurs as the <i>*result*</i> of the services performed.</p> <p>Chaining is <i>*only*</i> used when original requester needs to be informed about the existence of the downstream request(s), status and/or resulting appointments.</p>	<ol style="list-style-type: none"> 1. Referral to CI 2. CI assesses patient needs to determine what services are needed 3. CI refers the patient to the appropriate service provider(s) 	<p>1:1 or 1:* relationship between parent and child ServiceRequests where:</p> <ul style="list-style-type: none"> - ServiceRequest.identifier: new business identifier assigned for child - ServiceRequest.requisition: new business identifier assigned for child - ServiceRequest.replaces: not used - ServiceRequest.basedOn: populated in child with parent

Upcoming Topics & Meetings

- Deeper Dive into Central Intake – March 6th
- Constructing Message Bundles – March 6th
- Managing the CI build process – March 20th
- Next steps with balloting – March 20th
- Gap Analysis on Must Support Message Elements – During Dispositioning
 - Shared spreadsheet – sourcing information from referral receivers on their use of Must Support elements - *Bundle and Patient*



Canada Health Infoway

Thank you!

Contact Information

VISIT OUR WEBSITE
infoway-inforoute.ca

VISIT OUR SURVEY WEBSITE
insights.infoway-inforoute.ca/

LET'S CONNECT ON LINKEDIN
linkedin.com/company/canada-health-infoway/

LET'S CONNECT ON TWITTER
[@infoway](https://twitter.com/infoway)