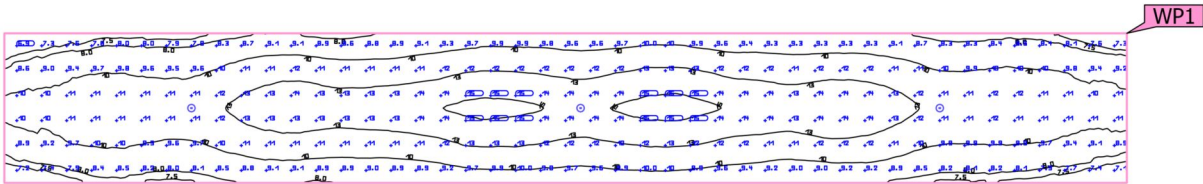


Building 1 · Storey 1 · COULOIR (Emergency light scene)

Working plane (COULOIR)



Properties	$\bar{E}$ (Target)	$E_{min}$	$E_{max}$	$U_o (g_1)$ (Target)	$g_2$	Index
Working plane (COULOIR)	10.8 lx	6.17 lx	15.9 lx	0.57	0.39	WP1
Perpendicular illuminance (adaptive)	( $\geq 100$ lx)			( $\geq 0.40$ )		
Height: 0.000 m, Wall zone: 0.000 m	✗			✓		

Notes on planning:  
The emergency lighting scene was calculated with the first reflection and without taking into account the placed furniture.